



TECHNICAL GUIDANCE

Corrosion-resistant, slim purgometer with stainless steel body for measuring gases and liquids

P-900 Purgometer

■ OUTLINE

The P-900 is a slim purgometer with an all stainless-steel body. Reducing the material content has achieved a low price and quick delivery.

■ MAJOR APPLICATIONS

Corrosion-resistant equipment

■ STANDARD SPECIFICATIONS

Measuring fluid	Gases Liquid	
Measuring range	Air	P-901 Min. 80 to 800 mL/min (nor) Max. 12 to 60 L/min (nor)
		P-902 Min. 80 to 800 mL/min (nor) Max. 6 to 60 L/min (nor)
	Water	Min. 5 to 50 mL/min Max. 0.25 to 2.5 L/min
	<ul style="list-style-type: none"> When selecting a flow range, refer to "Index & Quick Reference for P Series Purgometers" (TG-S0001). When selecting a flow range, refer to the standard flow rate table. 	
Range ability	10:1 (10:2 for some models)	
Indication accuracy	P-901: $\pm 5\%$ F.S. P-902: $\pm 3\%$ F.S.	
Fluid pressure	Max. 0.8MPa	
Fluid temperature	Max. 120°C	
Material	Wetted part	SUS304, SUS316
	Tapered tube	Heat-resistant glass
	Gasket	Fluoro rubber (Max. 120°C) The maximum fluid temperature for gasket material may vary depending on usage and ambient conditions.
	Mounting plate	SUS304
	Cover	Polycarbonate
Process Connection	Rc : 1/4" (Standard) NPT : 1/4"	
Mounting	Screw mount on the panel front (Standard)	
Mass	approx. 0.5 kg (P-901)	



■ BASIC MODEL CODE

Model Code		Descriptions	Notes
P-90	<input type="checkbox"/> <input type="checkbox"/> <input type="checkbox"/> <input type="checkbox"/> <input type="checkbox"/> <input type="checkbox"/> <input type="checkbox"/> <input type="checkbox"/> <input type="checkbox"/> <input type="checkbox"/>		
Face-to-face dimension	1	114mm	
	2	224mm	
	9	Special	
Valve	— 0	Not provided	Refer to "Index & Quick Reference for P Series Purgometers" (TG-S0001).
	— L	Inlet (gas for atmospheric pressure scale)	
	— U	Outlet (gas for pressure scale or for negative pressure on the secondary side)	
	— Z	Special	
Alarm output	0	Not provided	
	Z	Special	
Wetted parts material	— 4	SUS304 (Standard)	
	— 6	SUS316	
	— Z	Special	
Gasket material	F	Fluoro rubber (Standard)	
	Z	Special	
Process connection type	— R	Rc (Standard)	
	— N	NPT female	
	— Z	Special	
Process connection size	2	1/4"	
	Z	Special	

■ ALARM CONTACT AND OUTPUT

Type	Availability	
Reed switch type alarm unit	General	×
	UL-approved	×
PAU optical alarm unit	×	

For CE approval, refer to "Index & Quick Reference for P Series Purgometers" (TG-S0001).

■ STANDARD FLOW RATE TABLE

When the fluid pressure is other than 0 MPa, refer to "Index & Quick Reference for P Series Purgometers" (TG-S0001).

Air (0°C, 0 MPa)	Water
80 to 800 mL/min(nor)	
0.1 to 1 L/min(nor)	5 to 50 mL/min
0.2 to 2 L/min(nor)	10 to 100 mL/min
0.3 to 3 L/min(nor)	20 to 200 mL/min
0.5 to 5 L/min(nor)	30 to 300 mL/min
1 to 10 L/min(nor)	50 to 500 mL/min
2 to 20 L/min(nor)	0.1 to 1 L/min
3 to 30 L/min(nor)☆	0.15 to 1.5 L/min
5(10) to 50L/min(nor)	0.2 to 2 L/min
6(12) to 60L/min(nor)	0.25 to 2.5 L/min

Although other flow rate specifications are available, some flow ranges need to be changed. Contact us for details.

☆ If the flow range is more than 30 L/min (nor), the range ability of the P-901 will be 10:2.

■ OTHER AVAILABLE OPTIONS

You can specify the following options:

Double graduations, special graduations, built-in rubber fitting type, various fitting types, etc.

For details, refer to "Index & Quick Reference for P Series Purgometers" (TG-S0001).

ORDERING INFORMATION

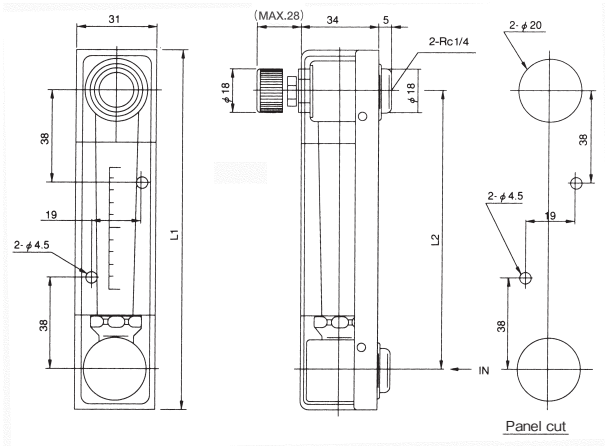
Basic model code	Items to be specified
P-90 □ - □□ - □□ - □□	① Fluid name - ② Flow range - ③ Press. - ④ Temp. - ⑤ Mounting option - ⑥ Other options
(Select in the model code table.)	(Refer to "Index & Quick Reference for P Series Purgemeters" (TG-S0001).)

DIMENSIONS

STANDARD TYPE

P-90 □ - UO - 4F - R2

- Screw mounting on the panel front
- Valve at the outlet



Model	Dimension (mm)	
	L1	L2
P-901	146	114
P-902	256	224

STANDARD MATERIAL

Parts name	Standard material	Available material
Body	○ SUS304	SUS316
Tapered tube	○ Heat-resistant glass	—
Float※	○ SUS316, Glass, Ruby	—
Gasket	○ Fluoro rubber	—
Valve	○ SUS316	—
Mounting board	SUS304	—
Cover	Polycarbonate	—

Parts marked "○" come in contact with the measuring fluid.

※We will select a proper material for your application.

· SUS316 may be used instead of SUS304 due to production reasons.

· ASTM or AISI materials equivalent to JIS materials may be used due to production reasons.

* Specification is subject to change without notice.

TOKYO KEISO CO., LTD.

Head Office : Shiba Toho Building, 1-7-24 Shibakoen, Minato-ku, Tokyo 105-8558

Tel : +81-3-3431-1625 (KEY) ; Fax : +81-3-3433-4922

e-mail : overseas.sales@tokyokeiso.co.jp ; URL : <http://www.tokyokeiso.co.jp>