



# TECHNICAL GUIDANCE

Corrosion-resistant purgometer with a fluorocarbon resin body for measuring large flow rates of liquids

## P-772 Purgometer

### OUTLINE

The P-772 is an ultra-clean purgometer made of all fluorocarbon resin. The same extra-clean structure as the P-771 is ensured by a fitting that can be directly coupled with tubes. Excellent sealing is achieved by the integral main unit/tapered tube structure and the welded valve/cap structure. The P-772 is ideal for applications for pure water, extra-pure water, and chemical solutions with a flow rate of up to 45 L/min.

### MAJOR APPLICATIONS

Pure/ultra-pure waterlines and chemical lines in semiconductor production processes

### STANDARD SPECIFICATIONS

|                     |   |  |
|---------------------|---|--|
| Measuring fluid     | Liquids   |  |
| Measuring range     | Water   | Min. 0.06 to 0.6 L/min<br>Max. 4.5 to 45 L/min           |
| Range ability       | 10 : 1  |  |
| Indication accuracy | ±5% F.S.  |  |
| Fluid pressure      | Max.0.5MPa  |  |
| Fluid temperature   | Max.60°C  | High temperature Specifications :<br>Possible up to 90°C |
| Material            | Meter body  | PFA  |
|                     | Tapered tube  | PFA  |
|                     | Gasket  | For models with a valve : PTFE                           |
|                     | Side plate  | PVC  |
|                     | Cover   | PVC  |
| Process connection  | Tube end fitting: (OD) 19mm (ID) 15.8mm (Standard)<br>Rc : 1/2", 3/4"<br>NPT : 1/2", 3/4" |  |
| Mounting            | Screw mount on the panel front (Standard)<br>Panel embedded mounting                      |  |
| Mass                | approx. 0.8 kg  |  |

### ALARM CONTACT AND OUTPUT

| Type                        | Availability  |
|-----------------------------|---------------|
| Reed switch type alarm unit | General ○     |
|                             | UL-approved ○ |
| PAU optical alarm unit      | ○             |

For CE approval, refer to "Index & Quick Reference for P Series Purgometers" (TG-S0001).

### STANDARD FLOW RATE TABLE

| For alarm output codes of 0 or E | For alarm output codes of A to D |                     |
|----------------------------------|----------------------------------|---------------------|
| Water                            | Water                            | Alarm setting range |
| 0.06 to 0.6 L/min                | /                                | /                   |
| 0.1 to 1 L/min                   |                                  |                     |
| 0.2 to 2 L/min                   |                                  |                     |
| 0.3 to 3 L/min                   |                                  |                     |
| 0.5 to 5 L/min                   |                                  |                     |
| 0.6 to 6 L/min                   | 0.5 to 5 L/min                   | 1 to 4 L/min        |
| 1 to 10 L/min                    | 0.6 to 6 L/min                   | 1.2 to 4.8 L/min    |
| 1.5 to 15 L/min                  | 1 to 10 L/min                    | 2 to 8 L/min        |
| 2 to 20 L/min                    | 1.5 to 15 L/min                  | 3 to 12 L/min       |
| 3 to 30 L/min                    | 2 to 20 L/min                    | 4 to 16 L/min       |
| 4 to 40 L/min                    | 3 to 30 L/min                    | 6 to 24 L/min       |
| 4.5 to 45 L/min                  | 4 to 40 L/min                    | 8 to 32 L/min       |

Although other flow rate specifications are available, some flow ranges need to be changed. Contact us for details.



### BASIC MODEL CODE

| Model Code              |                 | Descriptions                | Notes   |
|-------------------------|-----------------|-----------------------------|---|
| P-772                   | - □ □ - T □ □ □ |                             |   |
| Valve                   | - 0             | Not provided                | Refer to "Index & Quick Reference for P Series Purgometers" (TG-S0001).                 |
|                         | - U             | Outlet                      |   |
|                         | - Z             | Special                     |   |
|                         |                 |                             |   |
| Alarm output            | 0               | Not provided                |   |
|                         | A               | Reed switch alarm (LO)      |   |
|                         | B               | Reed switch alarm (LC)      |   |
|                         | C               | Reed switch alarm (HO)      |   |
|                         | D               | Reed switch alarm (HC)      |   |
|                         | E               | PAU alarm unit provided     |   |
| Wetted parts material   | - T             | PFA (Standard)              | Tapered tubes are also made of PFA  |
| Process connection type | - T             | Tube end fitting (Standard) |   |
|                         | - R             | Rc                          |   |
|                         | - N             | NPT female                  |   |
| Process connection size | D               | φ19×1.6 (Standard)          |   |
|                         | 4               | 1/2"                        |   |
|                         | 5               | 3/4"                        |   |
|                         |                 |                             | (OD)10mm (ID)8mm  |
|                         |                 |                             | (OD)12mm (ID)10mm   |
|                         | Z               | Special                     | (OD)12.7mm (ID)9.5mm<br>(OD)19mm (ID)16mm<br>(OD)25mm (ID)22mm<br>(OD)25.4mm (ID)22.2mm |

### OTHER AVAILABLE OPTIONS

You can specify the following options:  
Two-point alarm, length of reed switch lead wire, double graduations, special graduations, etc.  
For details, refer to "Index & Quick Reference for P Series Purgometers" (TG-S0001).

**ORDERING INFORMATION**

|                                   |  |
|-----------------------------------|--|
| Basic model code                  | Items to be specified  |
| P-772-□□-□-□□                     | ① Fluid name - ② Flow range - ③ Press. - ④ Temp. - ⑤ Mounting option - ⑥ Other options |
| (Select in the model code table.) | (Refer to "Index & Quick Reference for P Series Purgemeters" (TG-S0001).)              |

**NOTE**

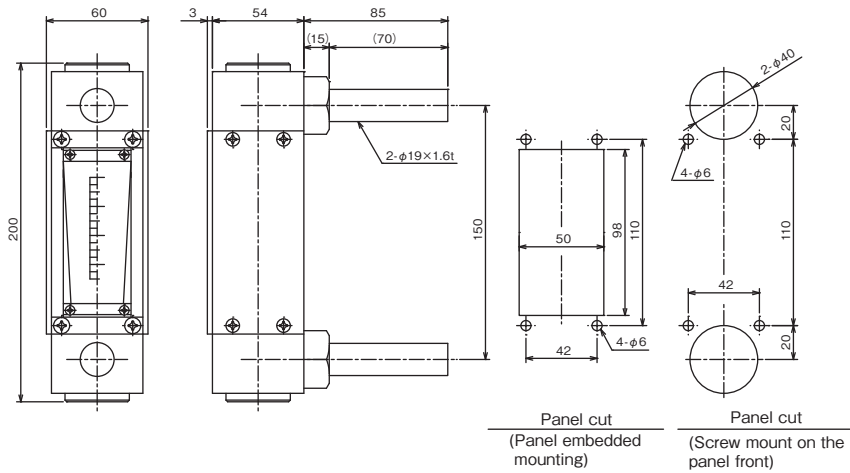
Depending on the required specifications, the P-772-U with a valve falls under "valves or components thereof" listed in (ii)-7 of row 3 of Appended Table 1 of the Export Trade Control Order. Contact us for details.

**DIMENSIONS**

● Standard type

P-772-00-T-TD

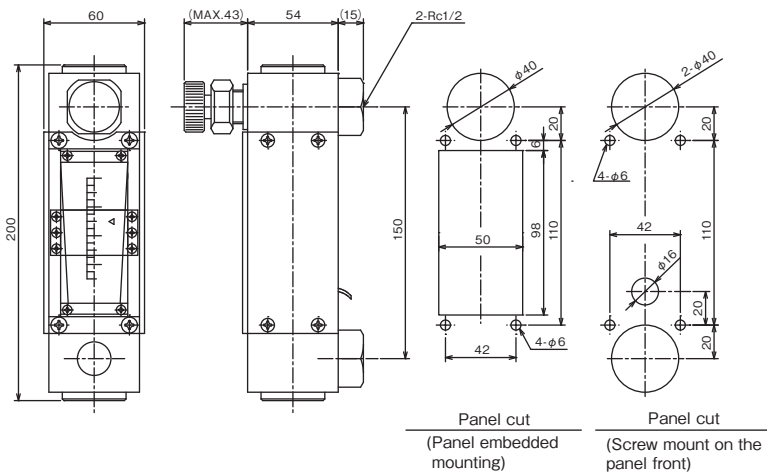
- Screw mounting on the panel front
- Without a valve



● Reed switch alarm type

P-772-UA-T-R4

- Screw mounting on the panel front
- Valve at the outlet



Note: Use non-magnetic material for the panel when the alarm output code is one of A to D.

● Standard material

| Parts name         | Standard material   |
|--------------------|---------------------|
| Body, Tapered tube | ○ PFA integral mold |
| Float              | ○ PTFE              |
| Float stopper      | ○ PFA               |
| Valve body         | ○ PCTFE             |
| Valve needle       | ○ PCTFE             |
| Scale plate        | Transparent PVC     |
| Side plate         | PVC                 |
| Cover              | PVC                 |

Parts marked "○" come in contact with the measuring fluid.

\* Specification is subject to change without notice.

**TOKYO KEISO CO., LTD.**

Head Office : Shiba Toho Building, 1-7-24 Shibakoen, Minato-ku, Tokyo 105-8558

Tel : +81-3-3431-1625 (KEY) ; Fax : +81-3-3433-4922

e-mail : overseas.sales@tokyokeiso.co.jp ; URL : http://www.tokyokeiso.co.jp