

■ OUTLINE

The C Series constant flow valve keeps the flow rate of gases or liquids constant even when the supply or load pressure changes. A diaphragm control valve automatically maintains the flow rate.

The C Series constant flow valve is usually used as a purge set with glass tube or metal tube flowmeters.

Smaller purge sets (CP and CM-900) are also available. See respective Technical Guidance for details.



■ LINEUP

Inlet pressure control type (for liquids and gases) and outlet pressure control type (for liquids)			
Model	Flow range		Standard process connection
	Liquids Water (density: 1.0 g/cm ³ , viscosity: 1.0 mPa·s)	Gases Air (0 °C, 1 atm)	
C-21	Min. 0.9 to 9 L/h Max. 12 to 120 L/h	Min. 0.015 to 0.15 m ³ /h (nor) Max. 0.36 to 3.6 m ³ /h (nor)	1/4 Screw 10 mm Flange
C-31	Min. 12 to 120 L/h Max. 30 to 300 L/h	Min. 0.36 to 3.6 m ³ /h (nor) Max. 0.9 to 9 m ³ /h (nor)	3/8 Screw 15 mm Flange
C-41	Min. 30 to 300 L/h Max. 70 to 700 L/h	Min. 0.9 to 9 m ³ /h (nor) Max. 2.1 to 21 m ³ /h (nor)	1/2 Screw 15 mm Flange
C-51	Min. 70 to 700 L/h Max. 120 to 1200 L/h	Min. 2.1 to 21 m ³ /h (nor) Max. 3.6 to 36 m ³ /h (nor)	20 mm Flange
C-61	Min. 120 to 1200 L/h Max. 180 to 1800 L/h	Min. 3.6 to 36 m ³ /h (nor) Max. 5.4 to 54 m ³ /h (nor)	20 mm Flange
C-71	Min. 180 to 1800 L/h Max. 300 to 3000 L/h	Min. 5.4 to 54 m ³ /h (nor) Max. 9 to 90 m ³ /h (nor)	25 mm Flange
C-81	Min. 300 to 3000 L/h Max. 1000 to 10000 L/h	Min. 9 to 90 m ³ /h (nor) Max. 23 to 230 m ³ /h (nor)	50 mm Flange

Outlet pressure control type (for gases)		
Model	Flow range	Standard process connection
	Gases Air (0 °C, 1 atm)	
C-22	Min. 0.015 to 0.15 m ³ /h (nor) Max. 0.36 to 3.6 m ³ /h (nor)	1/4 Screw 10 mm Flange
C-32	Min. 0.36 to 3.6 m ³ /h (nor) Max. 0.9 to 9 m ³ /h (nor)	3/8 Screw 15 mm Flange
C-42	Min. 0.9 to 9 m ³ /h (nor) Max. 2.1 to 21 m ³ /h (nor)	1/2 15 mm Flange
C-52	Min. 2.1 to 21 m ³ /h (nor) Max. 3.6 to 36 m ³ /h (nor)	20 mm Flange
C-62	Min. 3.6 to 36 m ³ /h (nor) Max. 5.4 to 54 m ³ /h (nor)	20 mm Flange
C-72	Min. 5.4 to 54 m ³ /h (nor) Max. 9 to 90 m ³ /h (nor)	25 mm Flange
C-82	Min. 9 to 90 m ³ /h (nor) Max. 23 to 230 m ³ /h (nor)	50 mm Flange

EXTERNAL DIMENSIONS AND MATERIALS

C-20

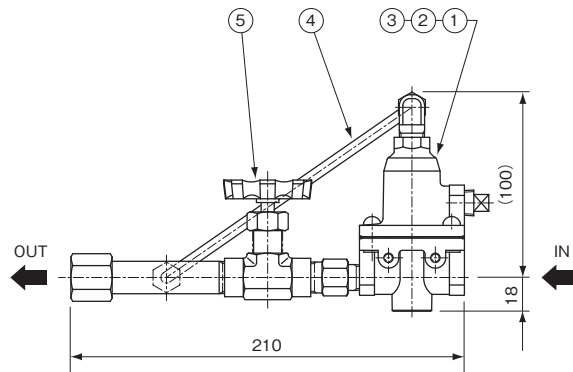
STANDARD SPECIFICATION

Flow range	Min. 0.9 to 9 L/h Max. 12 to 120 L/h
Liquid (water)	Min. 0.015 to 0.15 m ³ /h (nor) Max. 0.36 to 3.6 m ³ /h (nor)
Gas (air: 0°C , 1 atm)	1 MPa
Max. op. pressure	0.06 to 0.4 MPa
Acceptable difference in pressure between inlet and outlet	±5%F.S.
Control accuracy	120°C (When FPM is used) The maximum operating temperature depends on usage and conditions.
Max. op. temperature	Munsell 7.5BG4/1.5 (Only for carbon steel)
Painting	Standard Rc 1/4 (NPT 1/4) Flange connection is available.
Process connection	C-21 (inlet pressure control type): approx. 2.5 kg
Mass	C-22 (outlet pressure control type): approx. 4.5 kg

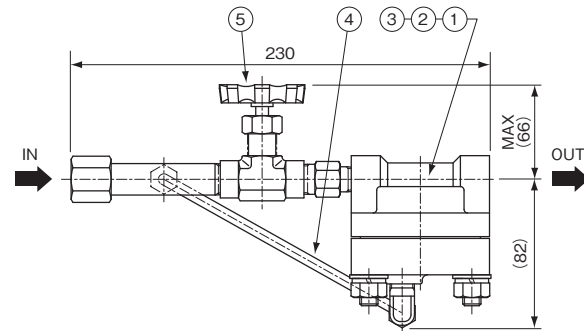
CONSTRUCTION AND MATERIALS

Part No.	Part name	Available material
①	Valve body	SCS14
②	Spring	SUS304, SUS316
③	Diaphragm	CR (FPM, PTFE)
④	Tube, union	SUS304, SUS316
⑤	Valve	SUS316

DIMENSIONS OF CONSTANT FLOW VALVE UNIT



C-21 (inlet pressure control type)

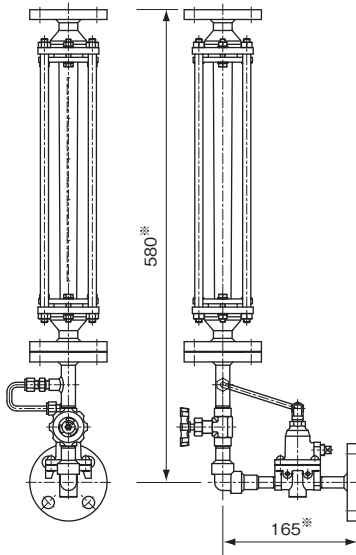


C-22 (outlet pressure control type)

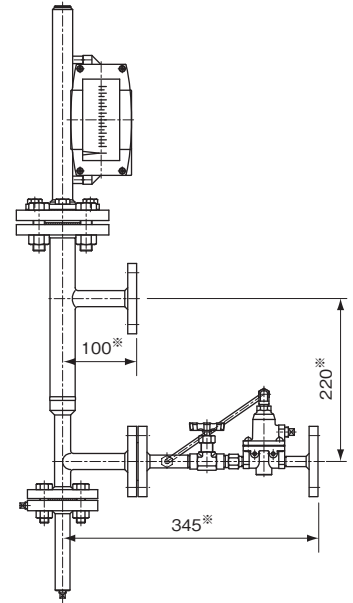
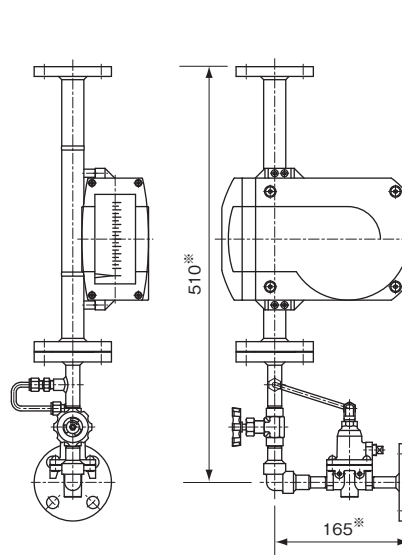
EXAMPLE OF COMBINATION WITH FLOWMETERS

Inlet pressure control type (Also applicable to outlet pressure control of liquids)

Combination with glass tube flowmeters



Combination with metal tube flowmeters



※Dimensions are for standard types. Confirm the dimensions in the approval drawing.

CR-21-101

- Flow range
Liquid (water) Min. 0.9 to 9 L/h
Max. 12 to 120 L/h
Gas (air: 0°C, 1 atm) Min. 0.015 to 0.15 m³/h (nor)
Max. 0.36 to 3.6 m³/h (nor)

- Standard connection
10 mm or 15 mm JIS10K flange

CAM-21-71□□ (for liquids)

- Flow range
Liquid (water) Min. 10 to 100 L/h
Max. 12 to 120 L/h

- Standard connection
15 mm or 20 mm JIS10K flange

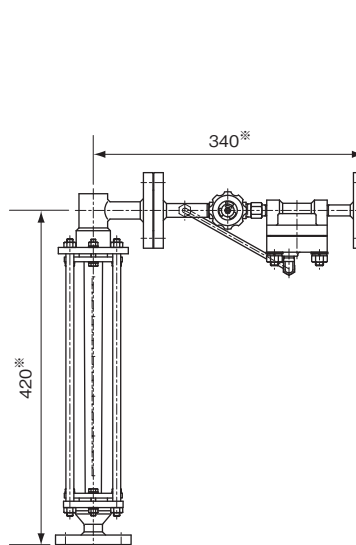
CAM-21-73□□/DL(for gases)

- Flow range
Gas (air: 0°C, 1 atm) Min. 0.31 to 3.1 m³/h (nor)
Max. 0.36 to 3.6 m³/h (nor)

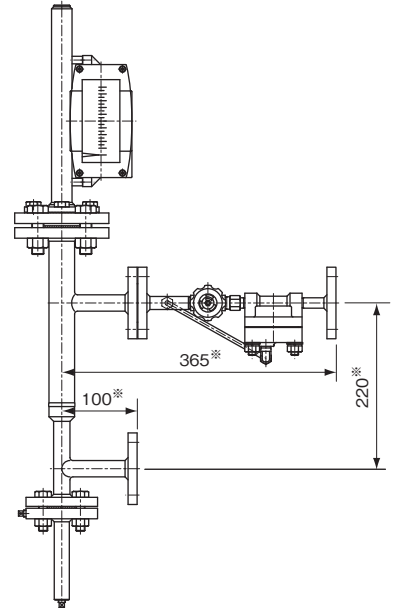
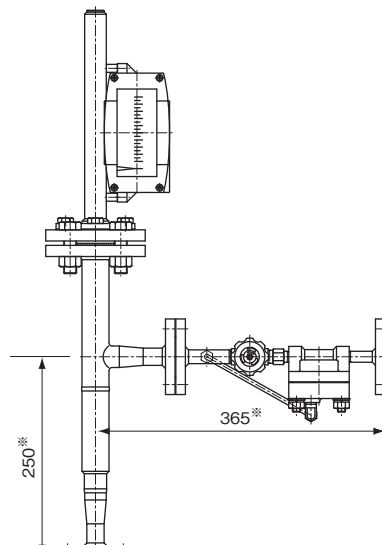
- Standard connection
15 mm or 20 mm JIS10K flange

Outlet pressure control type

Combination with glass tube flowmeters



Combination with metal tube flowmeters



※Dimensions are for standard types. Confirm the dimensions in the approval drawing.

CR-22-102

- Flow range
Gas (air: 0°C, 1 atm) Min. 0.015 to 0.15 m³/h (nor)
Max. 0.36 to 3.6 m³/h (nor)

- Standard connection
10 mm or 15 mm JIS10K flange

CAM-22-72□□/DU

- Flow range
Gas (air: 0°C, 1 atm) Min. 0.3 to 3 m³/h (nor)
Max. 0.36 to 3.6 m³/h (nor)

- Standard connection
15 mm or 20 mm JIS10K flange

CAM-22-73□□/DL

- Flow range
Gas (air: 0°C, 1 atm) Min. 0.31 to 3.1 m³/h (nor)
Max. 0.36 to 3.6 m³/h (nor)

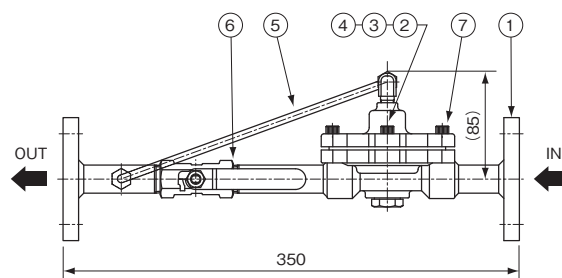
- Standard connection
15 mm or 20 mm JIS10K flange

C-30

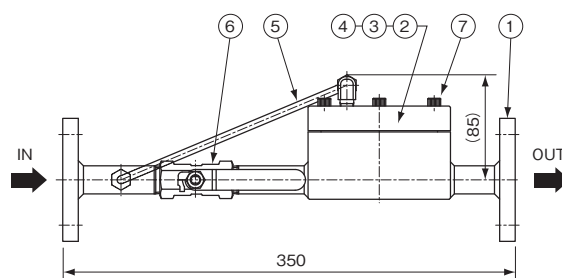
STANDARD SPECIFICATION

Flow range	
Liquid (water)	Min. 12 to 120 L/h Max. 30 to 300 L/h
Gas (air: 0°C , 1 atm)	Min. 0.36 to 3.6 m ³ /h (nor) Max. 0.9 to 9 m ³ /h (nor)
Max. op. pressure	1 MPa
Acceptable difference in pressure between inlet and outlet	0.1 to 0.5 MPa
Control accuracy	±5%F.S.
Max. op. temperature	120°C (When FPM is used) The maximum operation temperature depends on usage and conditions.
Painting	Munsell 7.5BG4/1.5 (Only for carbon steel)
Process connection	Standard 15 mm JIS10K flange (1/2 ANSI/JPI Class 150) Screw connection is available.
Mass	C-31 (inlet pressure control type): approx. 4 kg C-32 (outlet pressure control type): approx. 4 kg

DIMENSIONS OF CONSTANT FLOW VALVE UNIT



C-31 (inlet pressure control type)



C-32 (outlet pressure control type)

CONSTRUCTION AND MATERIALS

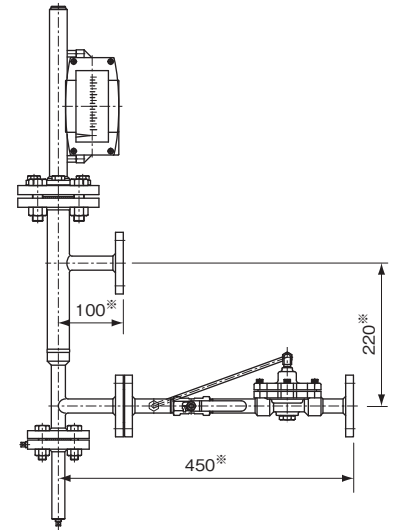
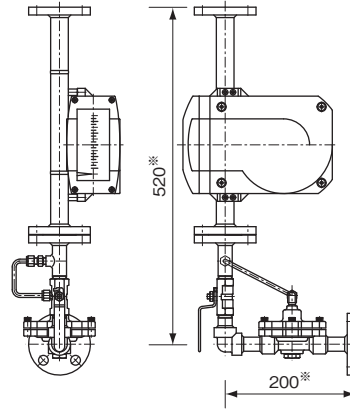
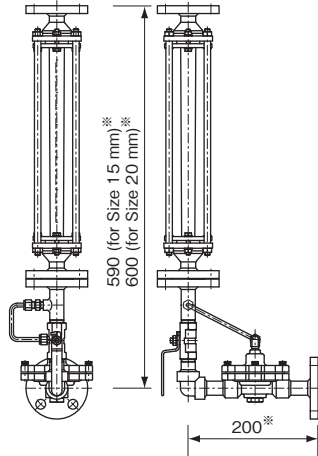
Part No.	Part name	Available material
①	Flange	CS, SUS304, SUS316
②	Valve body	SCS14 (C-31) SUS304, SUS316 (C-32)
③	Spring	SUS304, SUS316
④	Diaphragm	CR (FPM, PTFE)
⑤	Tube, union	SUS304, SUS316
⑥	Valve	SUS316
⑦	Bolt	CS, SUS304

■ EXAMPLE OF COMBINATION WITH FLOWMETERS

Inlet pressure control type (Also applicable to outlet pressure control of liquids)

Combination with glass tube flowmeters

Combination with metal tube flowmeters



※Dimensions are for standard types. Confirm the dimensions in the approval drawing.

CR-31-101

- Flow range
Liquid (water) Min. 12 to 120 L/h
Max. 30 to 300 L/h
Gas (air: 0°C, 1 atm) Min. 0.36 to 3.6 m³/h (nor)
Max. 0.9 to 9 m³/h (nor)
- Standard connection
15 mm or 20 mm JIS10K flange

CAM-31-71□□ (for liquids)

- Flow range
Liquid (water) Min. 12 to 120 L/h
Max. 30 to 300 L/h
- Standard connection
15 mm or 20 mm JIS10K flange

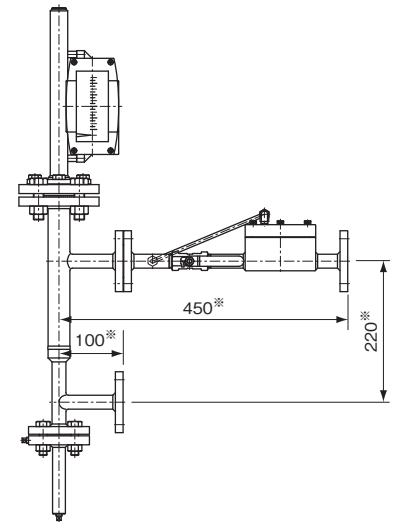
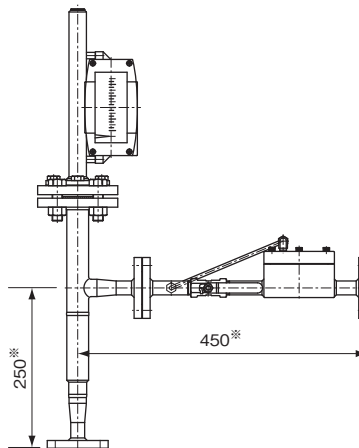
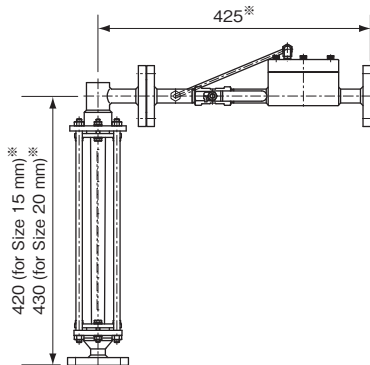
CAM-31-73□□/DL (for gases)

- Flow range
Gas (air: 0°C, 1 atm) Min. 0.36 to 3.6 m³/h (nor)
Max. 0.9 to 9 m³/h (nor)
- Standard connection
15 mm or 20 mm JIS10K flange

Outlet pressure control type

Combination with glass tube flowmeters

Combination with metal tube flowmeters



※Dimensions are for standard types. Confirm the dimensions in the approval drawing.

CR-32-102

- Flow range
Gas (air: 0°C, 1 atm) Min. 0.36 to 3.6 m³/h (nor)
Max. 0.9 to 9 m³/h (nor)
- Standard connection
15 mm or 20 mm JIS10K flange

CAM-32-72□□/DU

- Flow range
Gas (air: 0°C, 1 atm) Min. 0.36 to 3.6 m³/h (nor)
Max. 0.9 to 9 m³/h (nor)
- Standard connection
15 mm or 20 mm JIS10K flange

CAM-32-73□□/DL

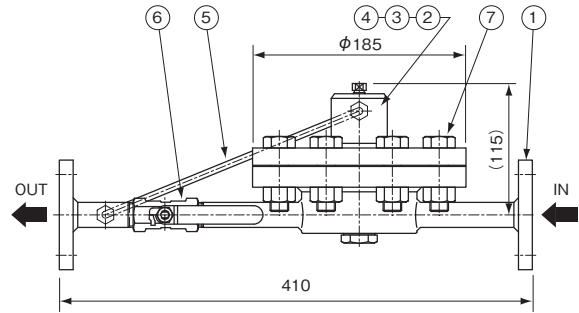
- Flow range
Gas (air: 0°C, 1 atm) Min. 0.36 to 3.6 m³/h (nor)
Max. 0.9 to 9 m³/h (nor)
- Standard connection
15 mm or 20 mm JIS10K flange

C-40

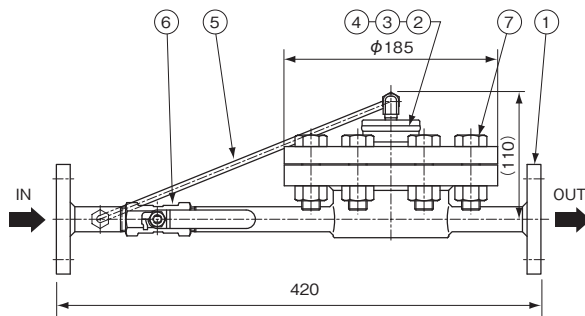
STANDARD SPECIFICATION

Flow range	
Liquid (water)	Min. 30 to 300 L/h Max. 70 to 700 L/h
Gas (air: 0°C , 1 atm)	Min. 0.9 to 9 m ³ /h (nor) Max. 2.1 to 21 m ³ /h (nor)
Max. op. pressure	1 MPa
Acceptable difference in pressure between inlet and outlet	0.1 to 0.6 MPa
Control accuracy	±5%F.S.
Max. op. temperature	120°C (When FPM is used) The maximum operation temperature depends on usage and conditions.
Painting	Munsell 7.5BG4/1.5 (Only for carbon steel)
Process connection	Standard 15 mm JIS10K flange (1/2 ANSI/JPI Class 150) Screw connection is available.
Mass	C-41 (inlet pressure control type): approx. 12 kg C-42 (outlet pressure control type): approx. 10 kg

DIMENSIONS OF CONSTANT FLOW VALVE UNIT



C-41 (inlet pressure control type)



C-42 (outlet pressure control type)

CONSTRUCTION AND MATERIALS

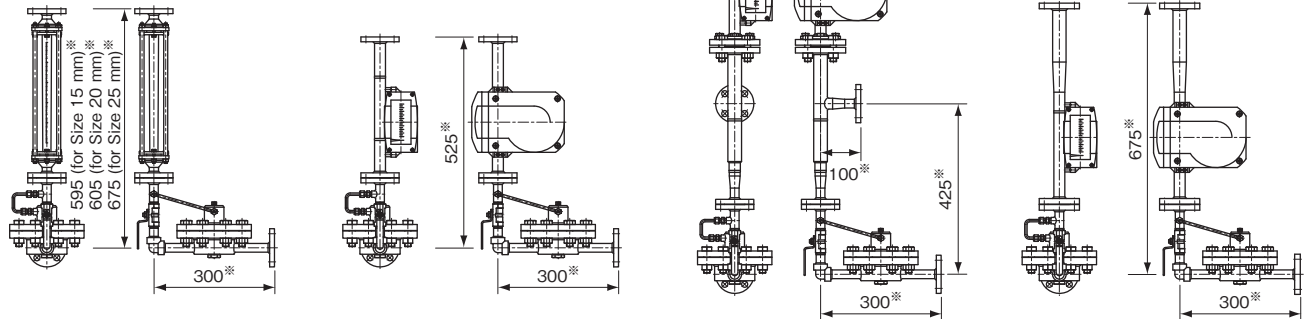
Part No.	Part name	Available material
①	Flange	CS, SUS304, SUS316
②	Valve body	CS, SUS304, SUS316
③	Spring	SUS304, SUS316
④	Diaphragm	CR (FPM, PTFE)
⑤	Tube, union	SUS304, SUS316
⑥	Valve	SUS316
⑦	Bolt, nut	CS, SUS304

■ EXAMPLE OF COMBINATION WITH FLOWMETERS

Inlet pressure control type (Also applicable to outlet pressure control of liquids)

Combination with glass tube flowmeters

Combination with metal tube flowmeters



※Dimensions are for standard types. Confirm the dimensions in the approval drawing.

CR-41-101

- Flow range
Liquid (water) Min. 30 to 300 L/h
Max. 70 to 700 L/h
Gas
(air: 0°C, 1 atm) Min. 0.9 to 9 m³/h (nor)
Max. 2.1 to 21 m³/h (nor)

- Standard connection
15 mm, 20 mm or
25 mm JIS10K flange

CAM-41-71□□ (for liquids)

- Flow range
Liquid (water) Min. 30 to 300 L/h
Max. 70 to 700 L/h

- Standard connection
15 mm or 20 mm
JIS10K flange

CAM-41-72□□/DU, CAM-41-71□□/DU (for gases)

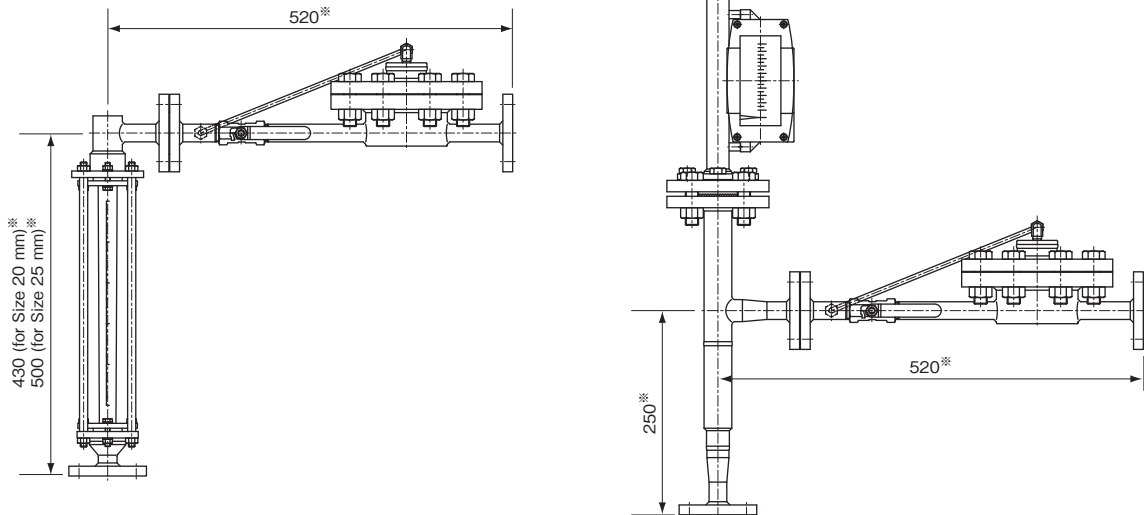
- Flow range
Gas (air) Min. 0.9 to 9 m³/h (nor)
for CAM-41-72□□/DU
Min. 1.6 to 16 m³/h (nor)
for CAM-41-71□□/DU
Gas (air: 0°C, 1 atm) Max. 2.1 to 21 m³/h (nor)

- Standard connection
15 mm or 20 mm JIS10K flange

Outlet pressure control type

Combination with glass tube flowmeters

Combination with metal tube flowmeters



※Dimensions are for standard types. Confirm the dimensions in the approval drawing.

CR-42-102

- Flow range
Gas Min. 0.9 to 9 m³/h (nor)
(air: 0°C, 1 atm) Max. 2.1 to 21 m³/h (nor)

- Standard connection
20 mm or 25 mm JIS10K flange

CAM-42-72□□/DU

- Flow range
Gas Min. 0.9 to 9 m³/h (nor)
(air: 0°C, 1 atm) Max. 2.1 to 21 m³/h (nor)

- Standard connection
15 mm or 20 mm JIS10K flange

C-50

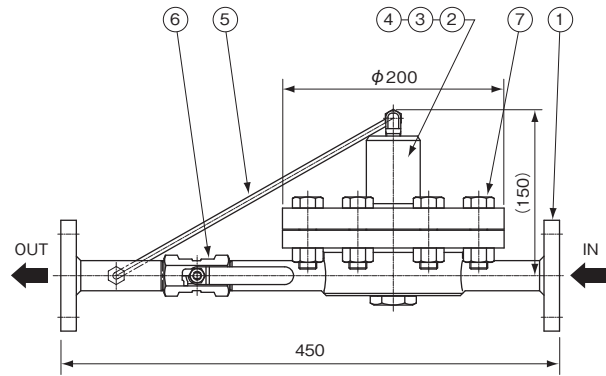
STANDARD SPECIFICATION

Flow range	
Liquid (water)	Min. 70 to 700 L/h Max. 120 to 1200 L/h
Gas (air: 0°C , 1 atm)	Min. 2.1 to 21 m ³ /h (nor) Max. 3.6 to 36 m ³ /h (nor)
Max. op. pressure	1 MPa
Acceptable difference in pressure between inlet and outlet	0.1 to 0.6 MPa
Control accuracy	±5%F.S.
Max. op. temperature	120°C (When FPM is used) The maximum operation temperature depends on usage and conditions.
Painting	Munsell 7.5BG4/1.5 (Only for carbon steel)
Process connection	Standard 20 mm JIS10K flange (3/4 ANSI/JPI Class 150)
Mass	C-51 (inlet pressure control type): approx. 14 kg C-52 (outlet pressure control type): approx. 10 kg

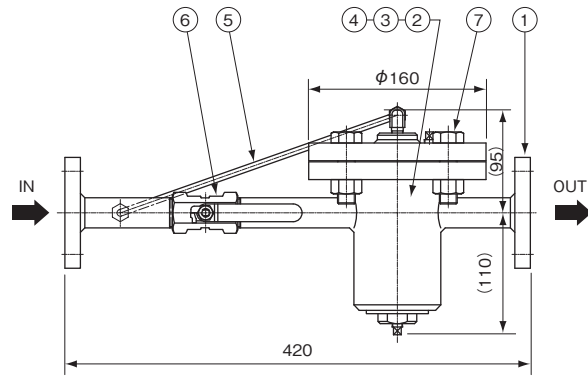
CONSTRUCTION AND MATERIALS

Part No.	Part name	Available material
①	Flange	CS, SUS304, SUS316
②	Valve body	CS, SUS304, SUS316
③	Spring	SUS304, SUS316
④	Diaphragm	CR (FPM, PTFE)
⑤	Tube, union	SUS304, SUS316
⑥	Valve	SUS316
⑦	Bolt, nut	CS, SUS304

DIMENSIONS OF CONSTANT FLOW VALVE UNIT



C-51 (inlet pressure control type)

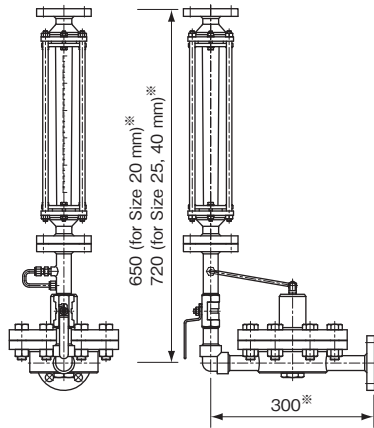


C-52 (outlet pressure control type)

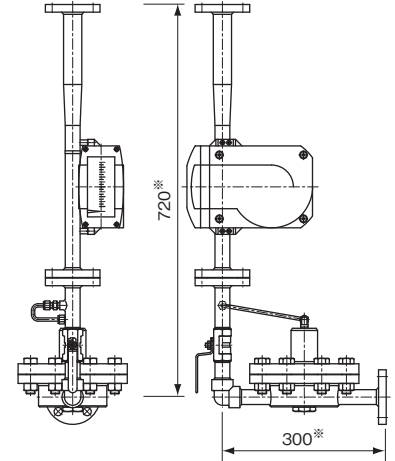
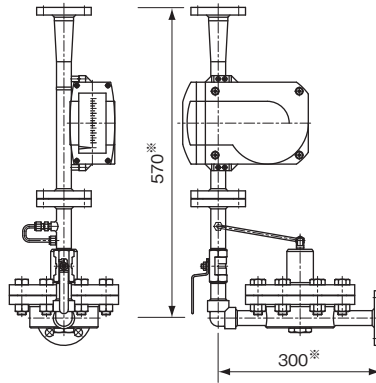
EXAMPLE OF COMBINATION WITH FLOWMETERS

Inlet pressure control type (Also applicable to outlet pressure control of liquids)

Combination with glass tube flowmeters



Combination with metal tube flowmeters



※Dimensions are for standard types. Confirm the dimensions in the approval drawing.

CR-51-101

- Flow range
 - Liquid (water) Min. 70 to 700 L/h
Max. 120 to 1200 L/h
 - Gas (air: 0°C, 1 atm) Min. 2.1 to 21 m³/h (nor)
Max. 3.6 to 36 m³/h (nor)
- Standard connection
20 mm, 25 mm or
40 mm JIS10K flange

CAM-51-71□□ (for liquids)

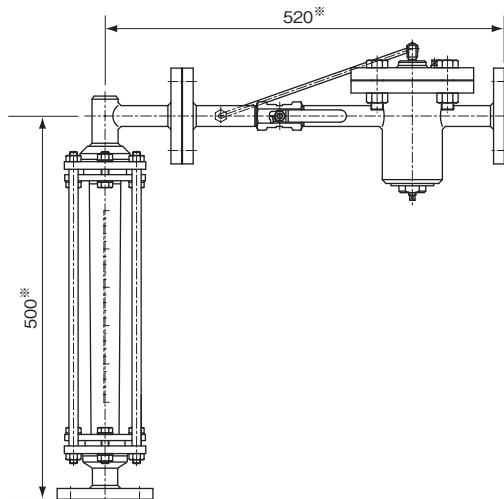
- Flow range
 - Liquid (water) Min. 70 to 700 L/h
Max. 120 to 1200 L/h
- Standard connection
15 mm or 20 mm JIS10K
flange

CAM-51-71□□/DU (for gases)

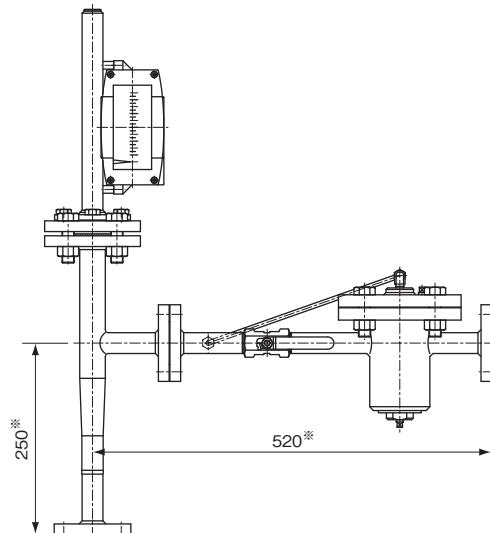
- Flow range
 - Gas (air: 0°C, 1 atm) Min. 2.1 to 21 m³/h (nor)
Max. 3.6 to 36 m³/h (nor)
- Standard connection
20 mm JIS10K flange

Outlet pressure control type

Combination with glass tube flowmeters



Combination with metal tube flowmeters



※Dimensions are for standard types. Confirm the dimensions in the approval drawing.

CR-52-102

- Flow range
 - Gas (air: 0°C, 1 atm) Min. 2.1 to 21 m³/h (nor)
Max. 3.6 to 36 m³/h (nor)
- Standard connection
25 mm or 40 mm JIS10K flange

CAM-52-72□□/DU

- Flow range
 - Gas (air: 0°C, 1 atm) Min. 2.1 to 21 m³/h (nor)
Max. 3.6 to 36 m³/h (nor)
- Standard connection
20 mm JIS10K flange

C-60

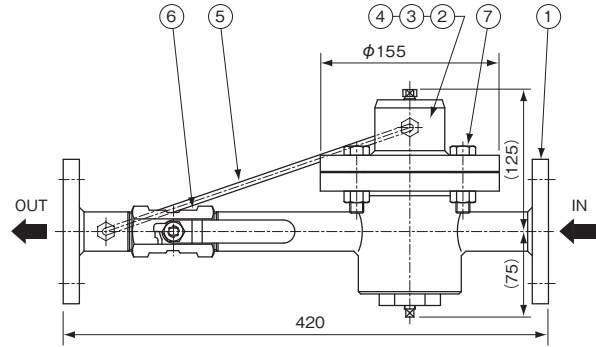
STANDARD SPECIFICATION

Flow range	
Liquid (water)	Min. 120 to 1200 L/h Max. 180 to 1800 L/h
Gas (air: 0°C , 1 atm)	Min. 3.6 to 36 m ³ /h (nor) Max. 5.4 to 54 m ³ /h (nor)
Max. op. pressure	1 MPa
Acceptable difference in pressure between inlet and outlet	0.1 to 0.6 MPa
Control accuracy	±5%F.S.
Max. op. temperature	120°C (When FPM is used) The maximum operation temperature depends on usage and conditions.
Painting	Munsell 7.5BG4/1.5 (Only for carbon steel)
Process connection	Standard 20 mm JIS10K flange (3/4 ANSI/JPI Class 150)
Mass	C-61 (inlet pressure control type): approx. 10 kg C-62 (outlet pressure control type): approx. 10 kg

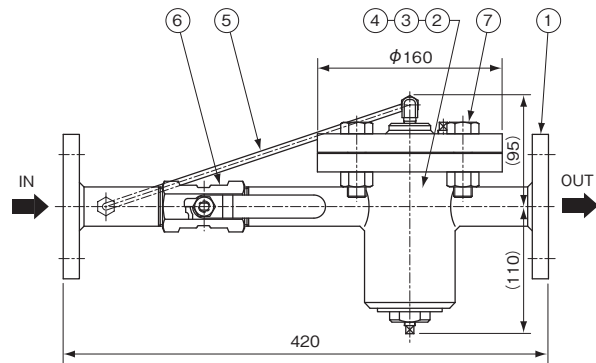
CONSTRUCTION AND MATERIALS

Part No.	Part name	Available material
①	Flange	CS, SUS304, SUS316
②	Valve body	CS, SUS304, SUS316
③	Spring	SUS304, SUS316
④	Diaphragm	CR (FPM, PTFE)
⑤	Tube, union	SUS304, SUS316
⑥	Valve	SUS316
⑦	Bolt, nut	CS, SUS304

DIMENSIONS OF CONSTANT FLOW VALVE UNIT



C-61 (inlet pressure control type)

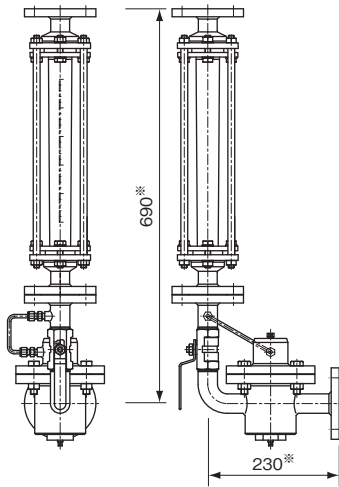


C-62 (outlet pressure control type)

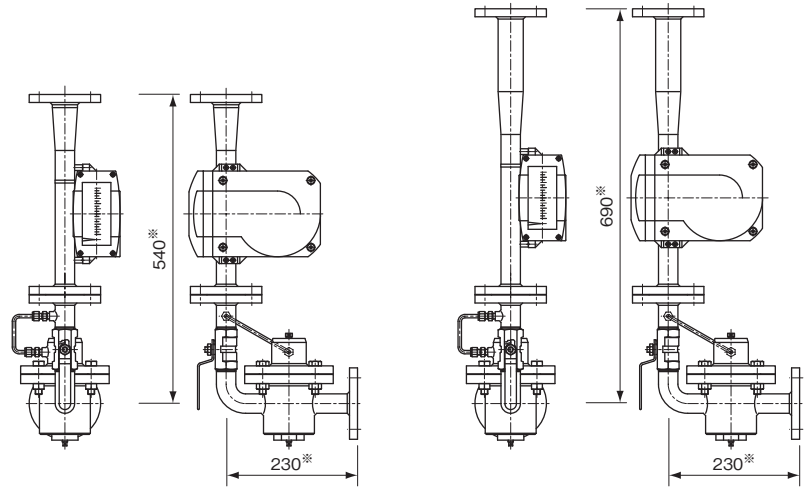
EXAMPLE OF COMBINATION WITH FLOWMETERS

Inlet pressure control type (Also applicable to outlet pressure control of liquids)

Combination with glass tube flowmeters



Combination with metal tube flowmeters



※Dimensions are for standard types. Confirm the dimensions in the approval drawing.

CR-61-101

- Flow range
 - Liquid (water) Min. 120 to 1200 L/h
 - Max. 180 to 1800 L/h
 - Gas (air: 0°C, 1 atm) Min. 3.6 to 36 m³/h (nor)
 - Max. 5.4 to 54 m³/h (nor)
- Standard connection 25 mm or 40 mm JIS10K flange

CAM-61-71□□ (for liquids)

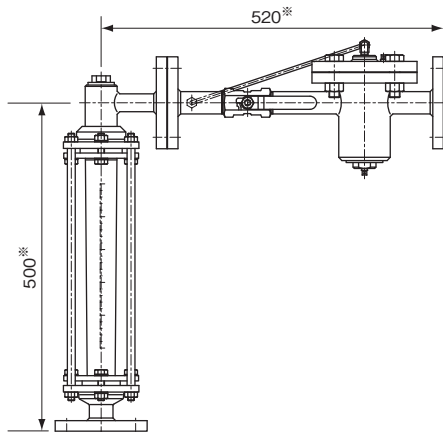
- Flow range
 - Liquid (water) Min. 120 to 1200 L/h
 - Max. 180 to 1800 L/h
- Standard connection 20 mm or 25 mm JIS10K flange

CAM-61-71□□/DU(for gases)

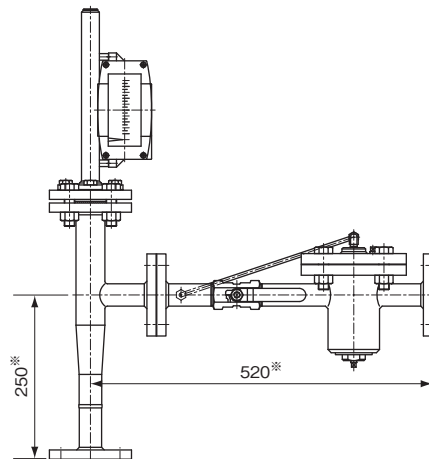
- Flow range
 - Gas (air: 0°C, 1 atm) Min. 3.6 to 36 m³/h (nor)
 - Max. 5.4 to 54 m³/h (nor)
- Standard connection 20 mm or 25 mm JIS10K flange

Outlet pressure control type

Combination with glass tube flowmeters



Combination with metal tube flowmeters



※Dimensions are for standard types. Confirm the dimensions in the approval drawing.

CR-62-102

- Flow range
 - Gas (air: 0°C, 1 atm) Min. 3.6 to 36 m³/h (nor)
 - Max. 5.4 to 54 m³/h (nor)
- Standard connection 25 mm or 40 mm JIS10K flange

CAM-62-72□□/DU

- Flow range
 - Gas (air: 0°C, 1 atm) Min. 3.6 to 36 m³/h (nor)
 - Max. 5.4 to 54 m³/h (nor)
- Standard connection 20 mm or 25 mm JIS10K flange

C-70

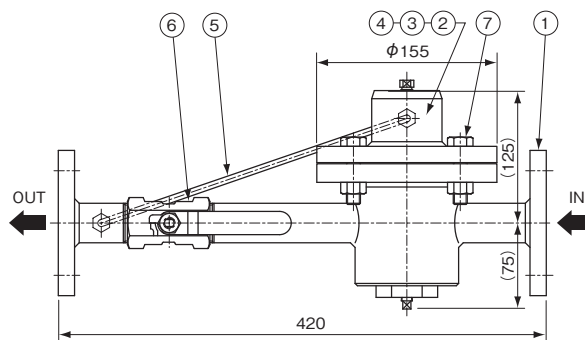
STANDARD SPECIFICATION

Flow range	
Liquid (water)	Min. 180 to 1800 L/h Max. 300 to 3000 L/h
Gas (air: 0°C , 1 atm)	Min. 5.4 to 54 m ³ /h (nor) Max. 9 to 90 m ³ /h (nor)
Max. op. pressure	1 MPa
Acceptable difference in pressure between inlet and outlet	0.1 to 0.6 MPa
Control accuracy	±5%F.S.
Max. op. temperature	120°C (When FPM is used) The maximum operation temperature depends on usage and conditions.
Painting	Munsell 7.5BG4/1.5 (Only for carbon steel)
Process connection	Standard 25 mm JIS10K flange (1 ANSI/JPI Class 150)
Mass	C-71 (inlet pressure control type): approx. 11 kg C-72 (outlet pressure control type): approx. 11 kg

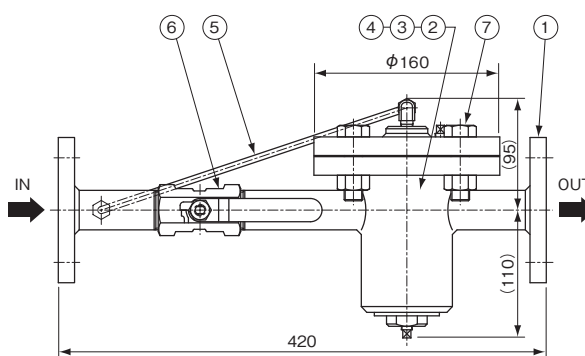
CONSTRUCTION AND MATERIALS

Part No.	Part name	Available material
①	Flange	CS, SUS304, SUS316
②	Valve body	CS, SUS304, SUS316
③	Spring	SUS304, SUS316
④	Diaphragm	CR (FPM, PTFE)
⑤	Tube, union	SUS304, SUS316
⑥	Valve	SUS316
⑦	Bolt, nut	CS, SUS304

DIMENSIONS OF CONSTANT FLOW VALVE UNIT



C-71 (inlet pressure control type)



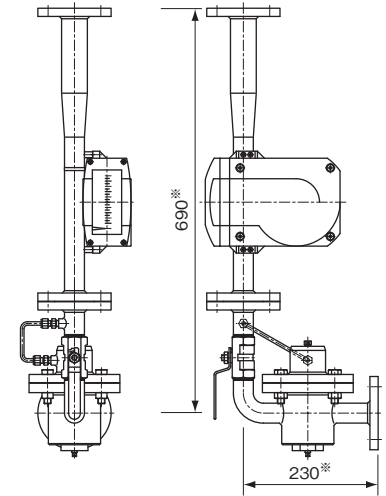
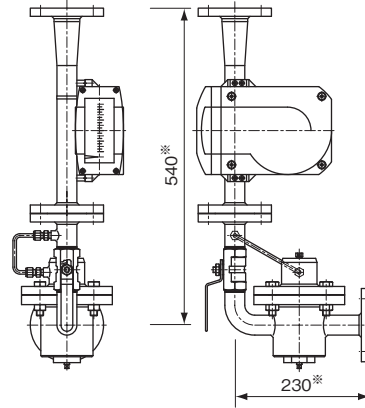
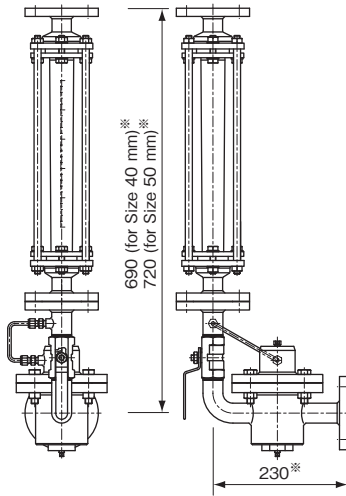
C-72 (outlet pressure control type)

EXAMPLE OF COMBINATION WITH FLOWMETERS

Inlet pressure control type (Also applicable to outlet pressure control of liquids)

Combination with glass tube flowmeters

Combination with metal tube flowmeters



※Dimensions are for standard types. Confirm the dimensions in the approval drawing.

CR-71-101

- Flow range
Liquid (water) Min. 180 to 1800 L/h
Max. 300 to 3000 L/h
Gas (air: 0°C, 1 atm) Min. 5.4 to 54 m³/h (nor)
Max. 9 to 90 m³/h (nor)
- Standard connection
40 mm or 50 mm JIS10K flange

CAM-71-71□□ (for liquids)

- Flow range
Liquid (water) Min. 180 to 1800 L/h
Max. 300 to 3000 L/h
- Standard connection
25 mm JIS10K flange

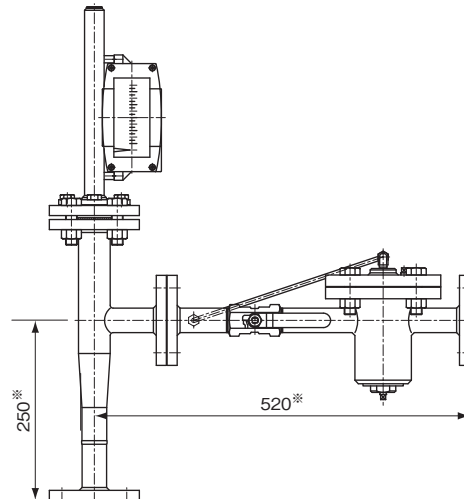
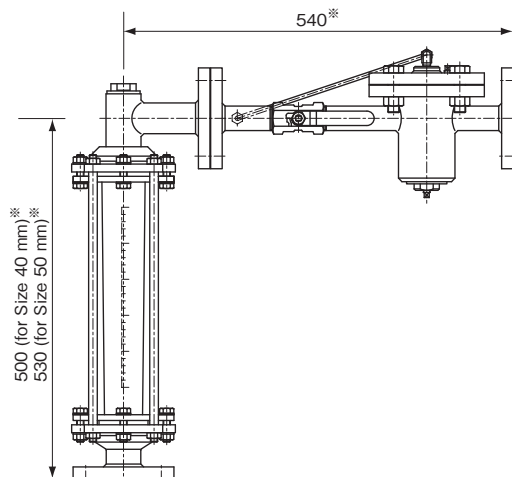
CAM-71-71□□/DU (for gases)

- Flow range
Gas (air: 0°C, 1 atm) Min. 5.4 to 54 m³/h (nor)
Max. 9 to 90 m³/h (nor)
- Standard connection
25 mm JIS10K flange

Outlet pressure control type

Combination with glass tube flowmeters

Combination with metal tube flowmeters



※Dimensions are for standard types. Confirm the dimensions in the approval drawing.

CR-72-102

- Flow range
Gas (air: 0°C, 1 atm) Min. 5.4 to 54 m³/h (nor)
Max. 9 to 90 m³/h (nor)
- Standard connection
40 mm or 50 mm JIS10K flange

CAM-72-72□□/DU

- Flow range
Gas (air: 0°C, 1 atm) Min. 5.4 to 54 m³/h (nor)
Max. 9 to 90 m³/h (nor)
- Standard connection
25 mm or 40 mm JIS10K flange

C-80

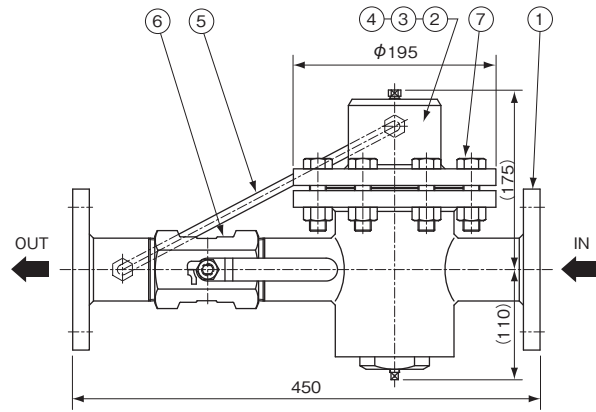
STANDARD SPECIFICATION

Flow range	
Liquid (water)	Min. 300 to 3000 L/h Max. 1000 to 10000 L/h
Gas (air: 0°C , 1 atm)	Min. 9 to 90 m ³ /h (nor) Max. 23 to 230 m ³ /h (nor)
Max. op. pressure	1 MPa
Acceptable difference in pressure between inlet and outlet	0.1 to 0.6 MPa
Control accuracy	±10%F.S.
Max. op. temperature	120°C (When FPM is used) The maximum operation temperature depends on usage and conditions.
Painting	Munsell 7.5BG4/1.5 (Only for carbon steel)
Process connection	Standard 50 mm JIS10K flange (2 ANSI/JPI Class 150)
Mass	C-81 (inlet pressure control type): approx. 22 kg C-82 (outlet pressure control type): approx. 32 kg

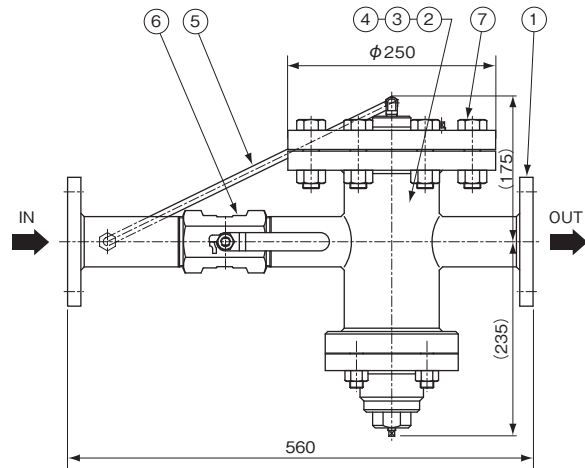
CONSTRUCTION AND MATERIALS

Part No.	Part name	Available material
①	Flange	CS, SUS304, SUS316
②	Valve body	CS, SUS304, SUS316
③	Spring	SUS304, SUS316
④	Diaphragm	CR (FPM, PTFE)
⑤	Tube, union	SUS304, SUS316
⑥	Valve	SUS316
⑦	Bolt, nut	CS, SUS304

DIMENSIONS OF CONSTANT FLOW VALVE UNIT



C-81 (inlet pressure control type)

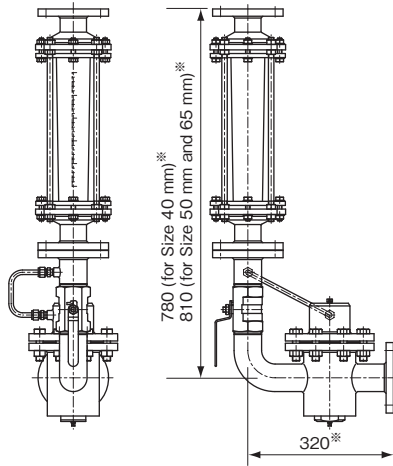


C-82 (outlet pressure control type)

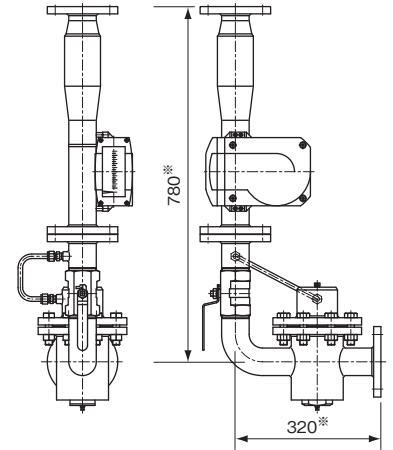
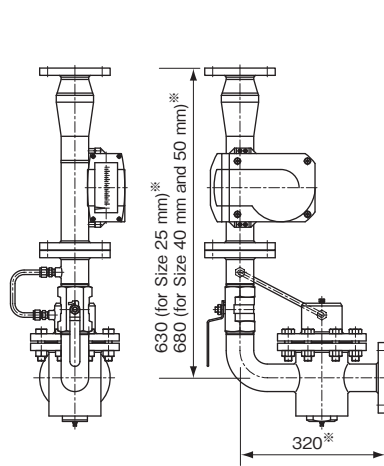
EXAMPLE OF COMBINATION WITH FLOWMETERS

Inlet pressure control type (Also applicable to outlet pressure control of liquids)

Combination with glass tube flowmeters



Combination with metal tube flowmeters



※Dimensions are for standard types. Confirm the dimensions in the approval drawing.

CR-81-101

- Flow range
Liquid (water) Min. 300 to 3000 L/h
Max. 1 to 10 m³/h
Gas (air: 0°C, 1 atm) Min. 9 to 90 m³/h (nor)
Max. 21 to 210 m³/h (nor)
- Standard connection
40 mm, 50 mm or 65 mm
JIS10K flange

CAM-81-71□□ (for liquids)

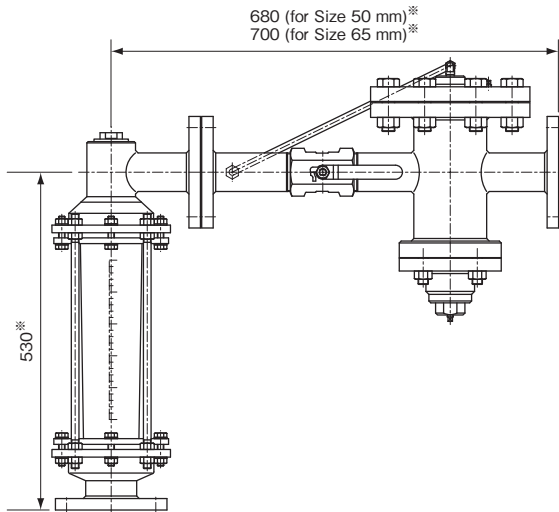
- Flow range
Liquid (water) Min. 300 to 3000 L/h
Max. 1 to 10 m³/h
- Standard connection
25 mm, 40 mm or 50 mm
JIS10K flange

CAM-81-71□□/DU (for gases)

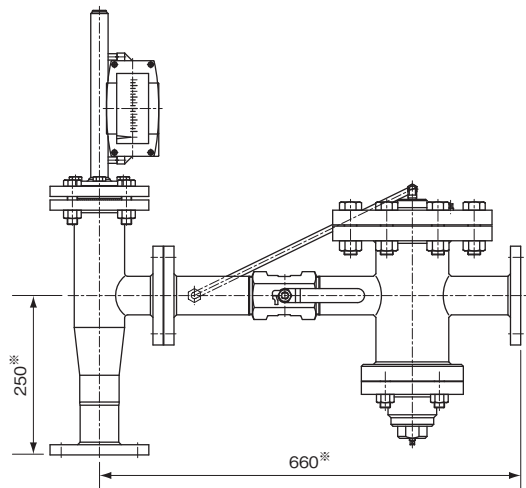
- Flow range
Gas (air: 0°C, 1 atm) Min. 9 to 90 m³/h (nor)
Max. 23 to 230 m³/h (nor)
- Standard connection
25 mm, 40 mm or 50 mm
JIS10K flange

Outlet pressure control type

Combination with glass tube flowmeters



Combination with metal tube flowmeters



※Dimensions are for standard types. Confirm the dimensions in the approval drawing

CR-82-102

- Flow range
Gas (air: 0°C, 1 atm) Min. 9 to 90 m³/h (nor)
Max. 21 to 210 m³/h (nor)
- Standard connection
50 mm or 65 mm JIS10K flange

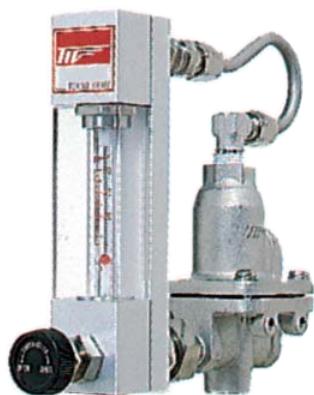
CAM-82-72□□/DU

- Flow range
Gas (air: 0°C, 1 atm) Min. 9 to 90 m³/h (nor)
Max. 23 to 230 m³/h (nor)
- Standard connection
40 mm or 50 mm JIS10K flange

■ OTHER TYPES PURGE SETS

CP and CM Series Purge sets

These are the combinations of constant flow valve and small size flowmeters for small to medium lines



CP-21-100



CP-31-500



CM-21-900

CX Series In-Line type Flow Set valves

These are direct in-line installation type flow control valves to keep set flow.



CX-1101
For liquids, fixed flow



CX-2000
For liquids, adjustable flow



CX-1500
For gases, fixed flow

* Specification is subject to change without notice.

TOKYO KEISO CO., LTD.

Head Office : Shiba Toho Building, 1-7-24 Shibakoen, Minato-ku, Tokyo 105-8558

Tel : +81-3-3431-1625 (KEY) ; Fax : +81-3-3433-4922

e-mail : overseas.sales@tokyokeiso.co.jp ; URL : <http://www.tokyokeiso.co.jp>