



TECHNICAL GUIDANCE

All-fluororesin, highly corrosion-resistant purgometer for measuring small flow rates of liquids

P-771 Purgometer

■ OUTLINE

The P-771 is an all-fluororesin, ultra-clean purgometer. All parts from wetted parts to structural parts are made of non-metallic material. In particular, the wetted parts and tapered tube are PFA integral mold, preventing the purgometer from rusting even in the atmosphere. Tube end connection is available.

The P-771 is ideal for the pure/ultra-pure water process and chemical injection process in semiconductor production facilities.

■ MAJOR APPLICATIONS

Pure/ultra-pure water lines and chemical injection lines in the semiconductor production process

■ STANDARD SPECIFICATIONS

Measuring fluid	Liquids
Measuring range	Water Min. 3 to 15 mL/min Max. 0.2 to 2 L/min
	<ul style="list-style-type: none"> When selecting a range, refer to "Index & Quick Reference for P Series Purgometers" (TG-S0001). When selecting a flow range, refer to the standard flow rate table.
Range ability	10 : 1 (10 : 2 for some models)
Indication accuracy	±5% F.S.
Fluid pressure	Max. 0.5MPa
Fluid temperature	Max. 60°C
Material	Wetted part PFA
	Tapered tube PFA
	Gasket PTFE (For models with a valve)
	Scale plate PVC
Process Connection	Tube end : $\phi 6.35 \times t1$ (Standard), $\phi 6 \times t1$, $\phi 8 \times t1$ Pillar fitting (Super 300 type) : $\phi 6 \times t1$ Tube connection, $\phi 8 \times t1$ Tube connection Rc : 1/8"
Mounting	Screw mount on the panel front
Mass	approx. 0.2 kg

The maximum operating temperature for each material may vary depending on usage and ambient conditions.

■ ALARM CONTACT AND OUTPUT

Type	Availability
Reed switch type alarm unit	General ×
	UL-approved ×
PAU optical alarm unit	○

For CE approval, refer to "Index & Quick Reference for P Series Purgometers" (TG-S0001).

■ STANDARD FLOW RATE TABLE

Water
3 to 15 mL/min*
2 to 20 mL/min*
3 to 30 mL/min*
5 to 50 mL/min
10 to 100 mL/min
20 to 200 mL/min
30 to 300 mL/min
50 to 500 mL/min
0.1 to 1 L/min
0.2 to 2 L/min

Although other flow rate specifications are available, some flow ranges need to be changed. Contact us for details.

* When the density and viscosity of liquid are different from 1.0 g/cm³ and 1.0 mPa·s respectively, the indication accuracy will be larger than ±8% F.S.



■ BASIC MODEL CODE

Model Code		Descriptions	Notes
P-771	<input type="checkbox"/> <input type="checkbox"/> <input type="checkbox"/> <input type="checkbox"/> T W <input type="checkbox"/> <input type="checkbox"/> <input type="checkbox"/>		
Valve	<input type="checkbox"/> 0 <input type="checkbox"/> U	Not provided Outlet	Refer to "Index & Quick Reference for P series Purgometers" (TG-S0001).
Alarm output	<input type="checkbox"/> O <input type="checkbox"/> E <input type="checkbox"/> Z	Not provided PAU alarm unit provided Special	
Wetted parts material	<input type="checkbox"/> T	PFA	Tapered tubes are also made of PFA
Gasket material	W	No provided/ welded structure (Standard)	PTFE with valve
Process connection	T	A $\phi 6.35 \times t1$ (Standard)	Tube end connection (Standard)
		B $\phi 6 \times t1$	
		C $\phi 8 \times t1$	
	P	B $\phi 6 \times t1$ Tube connection	Pillar fitting (Super 300 type)
C $\phi 8 \times t1$ Tube connection			
R	1	Rc 1/8	Rc

■ OTHER AVAILABLE OPTIONS

You can specify the following options:

Double graduations, special graduations, etc. For details, refer to "Index & Quick Reference for P Series Purgometers" (TG-S0001).

ORDERING INFORMATION

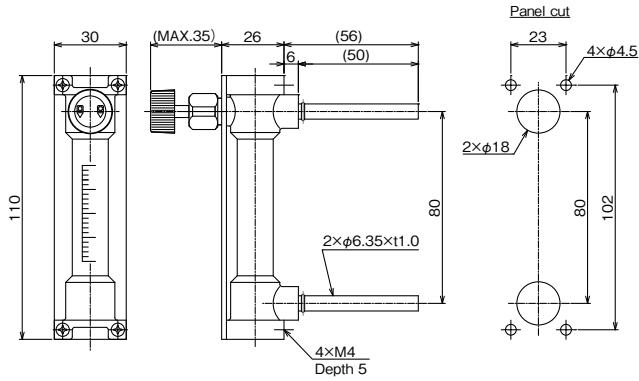
Basic model code	Items to be specified
P-771-□□-□□-□□	① Fluid name - ② Flow range - ③ Press. - ④ Temp. - ⑤ Mounting option - ⑥ Other options
(Select in the model code table.)	(Refer to "Index & Quick Reference for P Series Purgemeters" (TG-S0001).)

DIMENSIONS

● Tube end type

P-771-U0-TW-TA

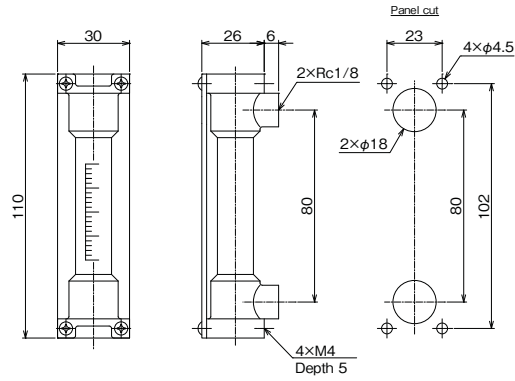
- Screw mounting on the panel front
- Valve at the outlet



● Rc type

P-771-00-TW-R1

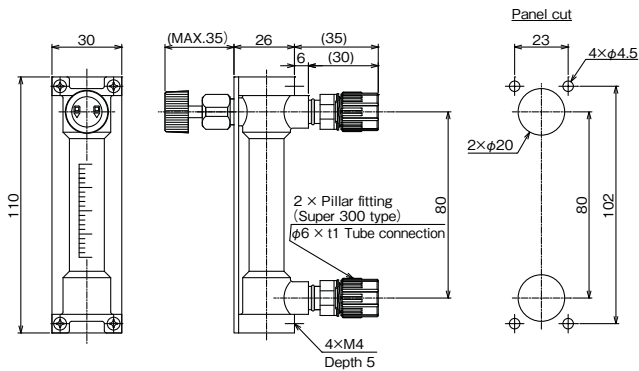
- Screw mounting on the panel front
- Without a valve



● Pillar fitting (Super 300 type)

P-771-U0-TW-PB

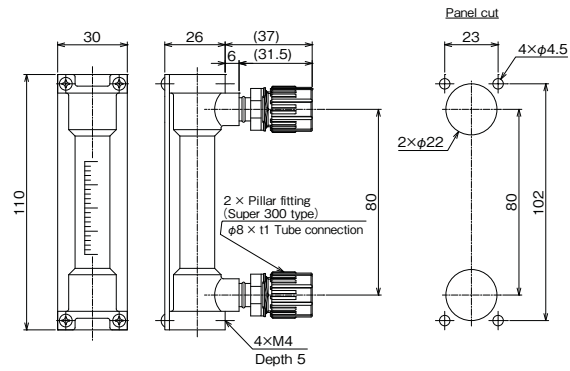
- Screw mounting on the panel front
- Valve at the outlet



● Pillar fitting (Super 300 type)

P-771-00-TW-PC

- Screw mounting on the panel front
- Without a valve



● Standard material

Parts name	Standard material
Body, tapered tube	○ PFA integral mold
Float	○ PTFE
Float stopper	○ PFA
Valve body	○ PCTFE
Valve needle / gasket	○ PCTFE / PTFE
Fitting	○ PFA
Scale plate	Transparent PVC

Parts marked "○" come in contact with the measuring fluid.

* Specification is subject to change without notice.

TOKYO KEISO CO., LTD.

Head Office : Shiba Toho Building, 1-7-24 Shibakoen, Minato-ku, Tokyo 105-8558

Tel : +81-3-3431-1625 (KEY) ; Fax : +81-3-3433-4922

e-mail : overseas.sales@tokyokeiso.co.jp ; URL : <http://www.tokyokeiso.co.jp>