



TECHNICAL GUIDANCE

Acryl-mold type purgometer for measuring gases and liquids
 Compact, low-cost, and quick in delivery
P-060
 Purgometer

OUTLINE

The P-060 is an acryl-mold, standard type purgometer.
 This ultra-compact, low-price purgometer is ideal for lot production.
 The P-060 is available in two sizes; 105 mm long and 22 mm wide and 114 mm long and 30 mm wide.

MAJOR APPLICATIONS

Waterlines, air/nitrogen lines

STANDARD SPECIFICATIONS

	Small flow rate type / Body code : A	Large flow rate type / Body code : B
Measuring fluid	Gases(air / nitrogen) Liquids(Equivalent to water: Density 1.0g/cm ³ Viscosity 1.0mPa·s)	
Measuring range	Air	Air
	Water	Water
Range ability	10 : 1 (10:2 for some models)	10 : 1
Indication accuracy	±5% F.S.	
Fluid pressure	Max. 0.5MPa	
Fluid temperature	Max. 50°C	
Material	Wetted part	PMMA
	Float	SUS304, PTFE, Glass, Ruby
	Gasket	Nitrile rubber (NBR)
	Cap	POM
	Joint	SUS304
	Scale plate	Polycarbonate
Lock nut	Not attached	POM
Process Connection	Rc : 1/8" (Standard)、1/4"	Rc : 3/8" (Standard)、1/4"
Mounting	Screw mount on the panel front (Standard)	Lock nut mount on the panel front (Standard)
Mass	approx.0.095 kg	approx.0.12 kg

ALARM CONTACT AND OUTPUT

Type	Availability
Reed switch alarm	UL-approved ○
PAU optical alarm unit	×

For CE approval, refer to "Index & Quick Reference for P Series Purgometers" (TG-S0001).

STANDARD FLOW RATE TABLE

Small flow rate type / Bodycode: A

For alarm output codes of 0		For alarm output codes of A to D			
Air or N ₂ 20°C, 0 MPa (1 atm)	Water	Air or N ₂ 20°C, 0 MPa (1 atm)	Alarm setting range	Water	Alarm setting range
0.2 to 2L/min(nor)	10 to 100mL/min	/	/	/	/
0.5 to 5L/min(nor)	40 to 400mL/min	/	/	/	/
1 to 10L/min(nor)	0.1 to 1L/min	/	/	0.1 to 1L/min	0.2 to 0.8L/min
2 to 20L/min(nor)	0.2 to 2L/min	/	/	0.2 to 2L/min	0.4 to 1.6L/min
3 to 30L/min(nor)	0.5 to 2.5L/min	/	/	0.5 to 2.5L/min	0.5 to 2L/min
5 to 50L/min(nor)	0.3 to 3L/min	5 to 50L/min(nor)	10 to 40L/min(nor)	0.3 to 3L/min	0.6 to 2.4L/min

Large flow rate type / Bodycode: B

For alarm output codes of 0		For alarm output codes of A to D			
Air or N ₂ 20°C, 0 MPa (1 atm)	Water	Air or N ₂ 20°C, 0 MPa (1 atm)	Alarm setting range	Water	Alarm setting range
5 to 50L/min(nor)	/	/	/	/	/
10 to 100L/min(nor)	0.3 to 3L/min	10 to 100L/min(nor)	20 to 80L/min(nor)	0.3 to 3L/min	0.6 to 2.4L/min
20 to 200L/min(nor)	0.5 to 5L/min	20 to 200L/min(nor)	40 to 160L/min(nor)	0.5 to 5L/min	1 to 4L/min
30 to 300L/min(nor)	1 to 10L/min	30 to 300L/min(nor)	60 to 240L/min(nor)	1 to 10L/min	2 to 8L/min



Small flow rate type Large flow rate type

BASIC MODEL CODE (Small flow rate type / Body code:A)

Model Code										Descriptions	Notes		
P-062	-	□	□	□	□	□	-	□	R			□	A
Fluid	-	L										Water	
	-	A										Air	
	-	N										N ₂	
	-	Z										Other liquids / gases	
Measuring range			0001									Water : 100mL/min	
			0004									∅ : 40mL/min	
			0010									∅ : 1L/min	
			0020									∅ : 2L/min	
			0025									∅ : 2.5L/min	
			0030									∅ : 3L/min	
			0020									Gas : 2L/min(nor)	
			0050									∅ : 5L/min(nor)	
			0100									∅ : 10L/min(nor)	
			0200									∅ : 20L/min(nor)	
		0300									∅ : 30L/min(nor)		
		0500									∅ : 50L/min(nor)		
Valve	-	0										Not provided	
	-	L										Inlet	
Alarm										0		Not provided	
										A		Reed switch (LO)	
										B		Reed switch (LC)	
										C		Reed switch (HO)	
									D		Reed switch (HC)		
Process Connection type										-	R	Rc	
Process Connection size											1	1/8" (Standard)	
Process Connection size											2	1/4"	
Body code											A	Small flow rate type (22mm Wide, 105mm long)	

BASIC MODEL CODE (Large flow rate type / Body code:B)

Model Code										Descriptions	Notes		
P-062	-	□	□	□	□	□	-	□	R			□	B
Fluid	-	L										Water	
	-	A										Air	
	-	N										N ₂	
	-	Z										Other liquids / gases	
Measuring range			0030									Water : 3L/min	
			0050									∅ : 5L/min	
			0100									∅ : 10L/min	
			0500									Gas : 50L/min(nor)	
			1000									∅ : 100L/min(nor)	
			2000									∅ : 200L/min(nor)	
		3000									∅ : 300L/min(nor)		
Valve	-	0										Not provided	
	-	L										Inlet	
Alarm										0		Not provided	
										A		Reed switch (LO)	
										B		Reed switch (LC)	
										C		Reed switch (HO)	
									D		Reed switch (HC)		
Process Connection type										-	R	Rc	
Process Connection size											2	1/4"	
Process Connection size											3	3/8" (Standard)	
Body code											B	Large flow rate type (30mm Wide, 114mm long)	

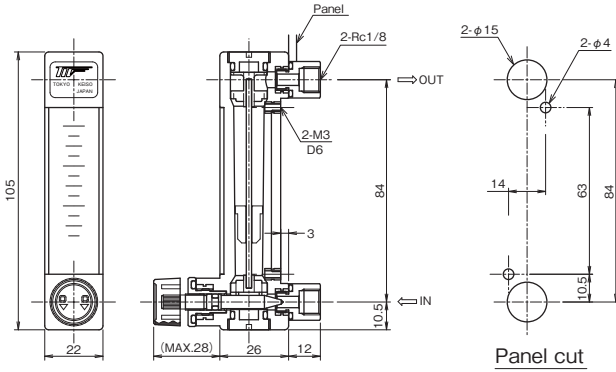
ORDERING INFORMATION

Basic model code	Items to be specified
P-062-□□□□□ - □□ - □□□	No designation
(Select in the model code table.)	

DIMENSIONS

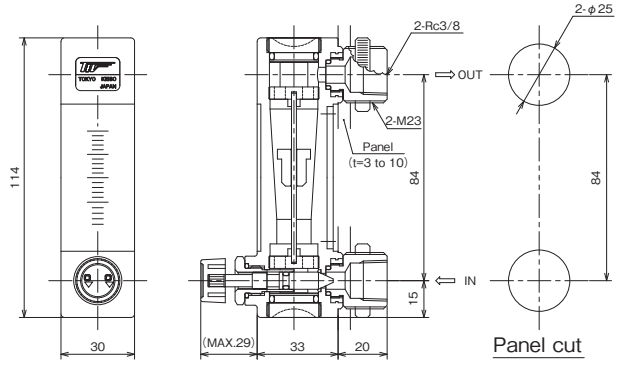
● **Body code A: Standard type (Connection size Rc1/8)**

- Screw mounting on the panel front
- Valve at the inlet



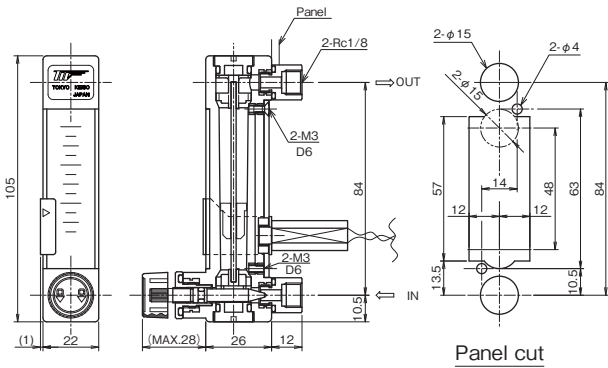
● **Body code B: Standard type (Connection size Rc3/8)**

- Lock nut mounting on the panel front
- Valve at the inlet



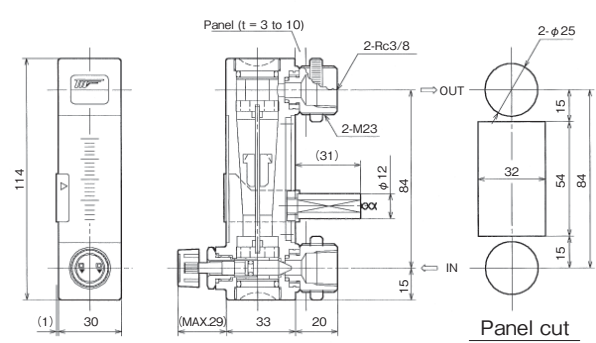
● **Body code A: Reed switch alarm type (Connection size Rc1/8)**

- Screw mounting on the panel front
- Valve at the inlet



● **Body code B: Reed switch alarm type (Connection size Rc3/8)**

- Lock nut mounting on the panel front
- Valve at the inlet



Note: Use non-magnetic material for the panel when the alarm output code is one of A to D.
 For the case of mounting multiple sets in parallel (with alarm):
 A magnet is set in the float. If the distance between two sets is short, they may interfere with each other and the flow rate indication may not be accurate. Contact the factory if the mounting distance is less than 50 mm.

● **Standard material**

Parts name	Standard material
Body	○ PMMA
Float *	○ SUS304/PTFE/Glass/Ruby
Valve body	○ SUS304
Needle	○ SUS304
Cap	○ POM
Gasket	○ Nitrile rubber (NBR)
Fitting	○ SUS304
Scale plate	Polycarbonate

Parts marked "○" come in contact with the measuring fluid.
 * We will select a proper material for your application.
 · SUS316 may be used instead of SUS304 due to production reasons.
 · ASTM or AISI materials equivalent to JIS materials may be used due to production reasons.

* Specification is subject to change without notice.

TIV TOKYO KEISO CO., LTD.

Head Office : Shiba Toho Building, 1-7-24 Shibakoen, Minato-ku, Tokyo 105-8558
 Tel : +81-3-3431-1625 (KEY) ; Fax : +81-3-3433-4922
 e-mail : overseas.sales@tokyokeiso.co.jp ; URL : http://www.tokyokeiso.co.jp