

OUTLINE

FW-100 is a balance weight, float type level gauge. Liquid level in atmospheric tanks is detected by float and is indicated by the position of balance weight against Graduation plate.

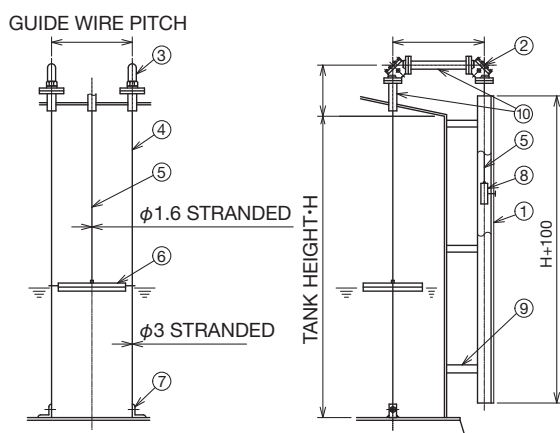
This is the most simple way of level measurement and indication is quite visible from distance. The measurement is conducted without any springs and tapes that offers high durability for long time operation.

STANDARD SPECIFICATION

- Model code : FW-100
- Measuring object : Liquids (Max. viscosity 600mPa·s without sticking and crystallization, Density range 0.6 to 1.9g/cm³)
- Measuring range : Max. 10m (Longer range on request)
- Operating pressure : ATM
- Liquid temp. : -190 to +400°C
- Amb. temp. : Max.60°C
- Indication : Graduation plate (Minimum graduation 50mm)
- Connection
 - Guide wire knob : Standard 40A (1-1/2B) screw of flange or welding
 - 90° guide elbow : Standard 40A (1-1/2B) screw or flange or welding



INSTALLATION EXAMPLE AND MATERIAL



No.	PARTS NAME	Q'ty	MATERIAL	OPTIONALLY AVAILABLE
1	Graduation plate	1	ALP/SUS304/SS400 *2	SUS304
2	90° guide elbow	2	FC250/AC2A	ADC12 *1, SCS13, SCS14
3	Guide wire knob	2	FC250/SUS304	SUS304/SUS304, SUS316/SUS316
4	Guide wire	2	SUS304	SUS316, FEP coverd
5	Measuring tpe	1	SUS316	FEP coverd
6	Float	1	SUS304	SUS316, PVC
7	bottom piece	2	SUS304	SUS316
8	Balance weight	1	SS400	SUS304, SUS316
9	Support	—	—	—
10	Pipe	—	—	—

*1: Standard material of screw connection

*2: Refer to Fig1 of Graduation plate material

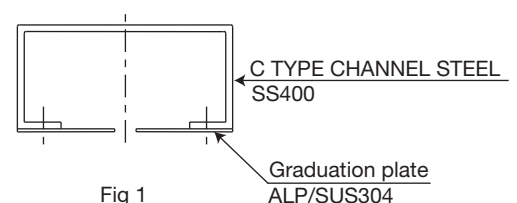
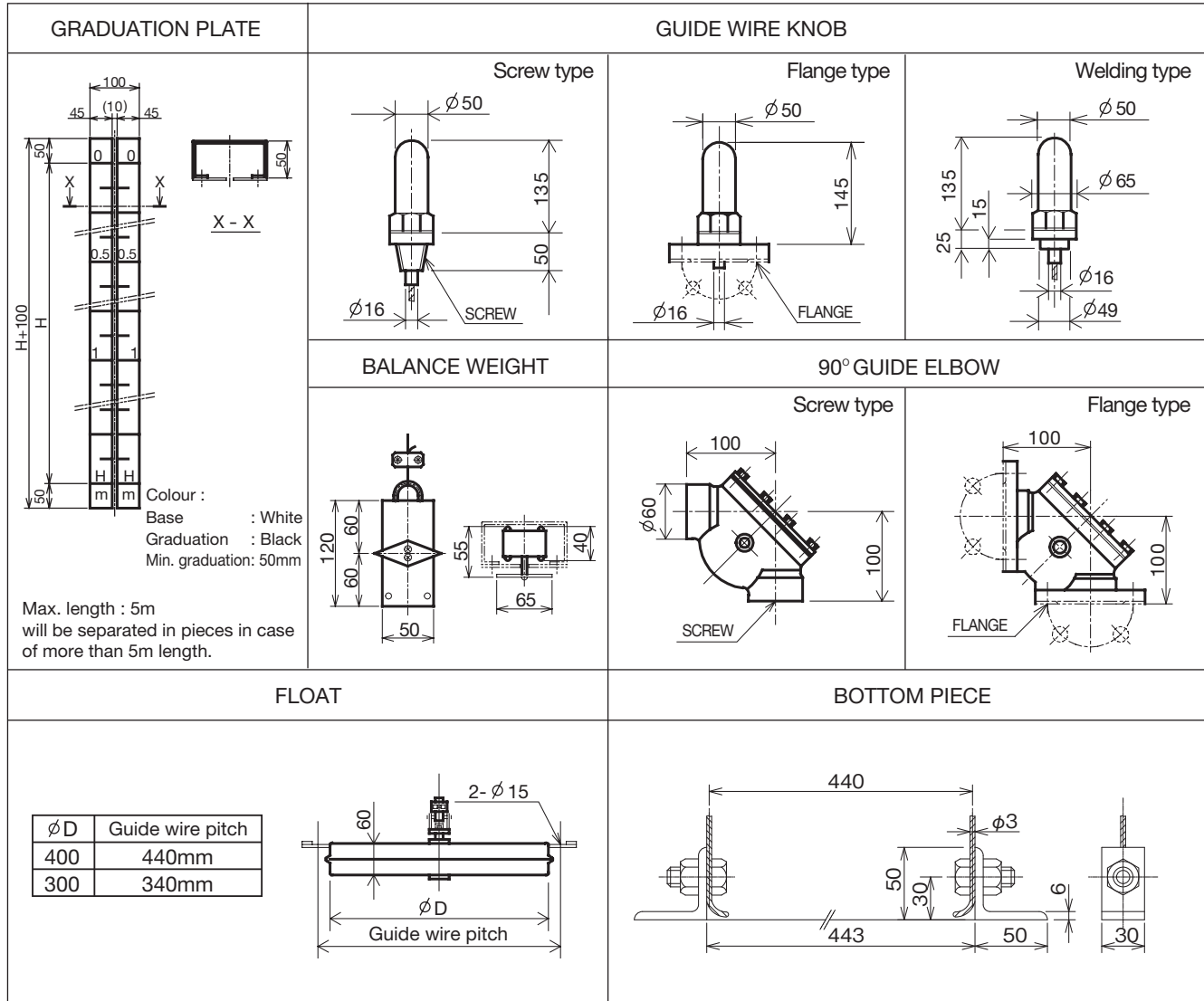


Fig 1

COMPONENTS



ORDERING INFORMATION

Measuring range(H) _____ mm

Liquid density _____

Tank connection

- Guide wire knob R 1-1/2
 40AJIS10KRF
 Welding

- 90° guide elbow Rc 1-1/2
 40AJIS10KRF

- Float diameter 400mm 300mm

- Wetted material Standard
 Designated material ()

* Specification is subject to change without notice.

TIV TOKYO KEISO CO., LTD.

Head Office : Shiba Toho Building, 1-7-24 Shibakoen, Minato-ku, Tokyo 105-8558

Tel : +81-3-3431-1625 (KEY) ; Fax : +81-3-3433-4922

e-mail : overseas.sales@tokyokeiso.co.jp ; URL : http://www.tokyokeiso.co.jp