

For stable water supply!

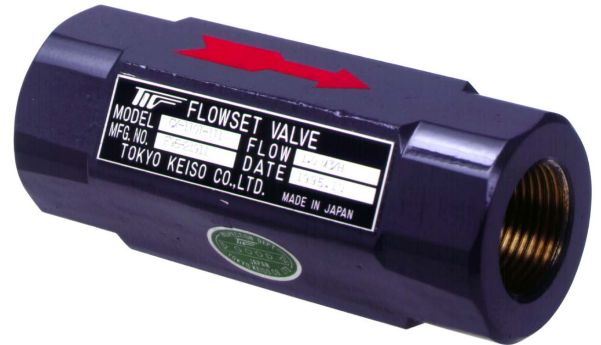
CX-1101 Series FLOW SET VALVE

■ GENERAL

CX-1101 FLOW SET VALVE is a constant flow valve for liquids. Even supply or load pressure of process changes, CX-1101 maintains constant flow of liquid. **CX-1101 FLOW SET VALVE** is suitable for water / hot water lines in office buildings, apartment buildings, factories and other buildings where stable water / hot water supply is required.

A setup at site is unnecessary because flow rate is set up in the high precision in accordance with customer's specifications in our factory.

CX-1101 can be installed to any direction of process i.e. horizontal or vertical.



■ FEATURES

- All metallic construction and high durability.
- Simple, self-regulating mechanism
- Cost effective and Quick delivery
- Easy screw connection
- Stable and accurate control characteristics
- Brass and SUS316 material are available to meet fluid corrosion

■ STANDARD SPECIFICATION

Size	15, 20, 25, 40
Fluid	Water and other liquids*
Fluid press.	Max. 1MPa
Control differential press.	0.03 0.7MPa
Control accuracy	± 5% (of the set flow rate)
Fluid temp.	Max. 150°C
Process connection	Rc thread, NPT, Other female threads

*Max.viscosity is 10mPa·s Not suitable for liquids with solids.

MODEL CODE

Model code		Description
CX-1101-		
Material	1	Brass(JIS C3604)/SUS304
	2	SUS316
Connection size	0	15mm
	1	20mm
	2	25mm
	3	40mm
Process connection	1	Rc thread
	2	NPT(F)
	3	Other female thread

SETTING RANGE

Flow rate can be set as per the following table. Specify setting flow rate.

Water (Sp.Gr.1.0g/cm³)

Size	Flow range (Qw)
15	3~10 L/min
20	5~25 L/min
25	10~40 L/min
40	25~70 L/min

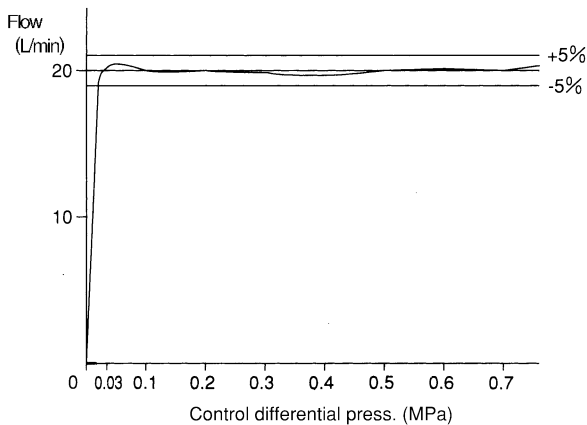
Refer to an upper table after you calculate (Qw) by the bottom formula in case of liquid density is except for 1.0.

$$Q_w = Q \times \sqrt{\frac{\gamma}{1.0}}$$

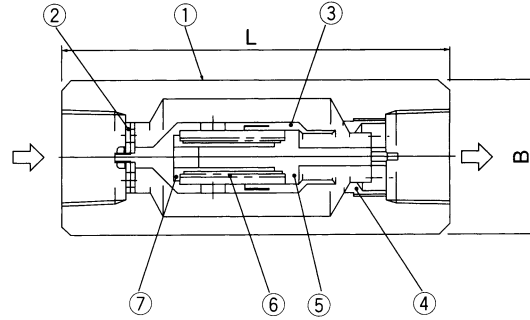
Q : The setup flow rate of the actual liquid
 γ : Density of actual liquid

CONTROL CHARACTERISTICS

CX-1101, Size: 25, 20L/min setting



STRUCTURE



B indicates face to face dimension of Hex. Material.

EXTERNAL DIMENSIONS

Size	L (mm)	B (mm)	MASS (Approx.)
15	90	32	0.6
20	110	41	1.0
25	130	46	1.5
40	150	65	2.8

MATERIAL

No.	Parts name	CX-1101-1□□	CX-1101-2□□
1	Body	SCS14 (Cast stainless steel)	SCS14 (Cast stainless steel)
2	Target plate	SUS304	SUS316
3	Valve	Brass (JIS C3604)	SUS316
4	Valve sheet	Brass (JIS C3604)	SUS316
5	Valve guide	SUS304	SUS316
6	Spring	SUS304	SUS316
7	Spring guide	Brass (JIS C3604)	SUS316

ORDER INFORMATION

Specify the following for order / inquiry

1. Model code
2. Setting flow rate (L/min)
3. Flow direction (Horizontal, Top → Bottom, Bottom → Top)
4. Density and Viscosity of the fluid

* Specification is subject to change without notice.

TOKYO KEISO CO., LTD.

Head Office : Shiba Toho Building, 1-7-24 Shibakoen, Minato-ku, Tokyo 105-8558
 Tel : +81-3-3431-1625 (KEY) ; Fax : +81-3-3433-4922
 e-mail : overseas.sales@tokyokeiso.co.jp ; URL : http://www.tokyokeiso.co.jp

