



TECHNICAL GUIDANCE

A purgometer for measuring micro flow rates of gases

P-880 Purgometer

OUTLINE

The P-880 is an area purgometer for measuring micro flow rates of gases. This purgometer is equipped with an improved valve to accurately control the flow rate. The P-880 is ideal for measuring and controlling micro flow rates.

FEATURES

- Micro flow rate measurement
Can measure flow rates from 0.15 to 1.5 mL/min (nor) to 6 to 60 L/min (nor)
- Easy flow rate control
Can control flow rates accurately. The optimum valve will be provided for your specification of inlet and outlet pressures.
- Selectable face-to-face dimensions
Three face-to-face dimensions (115 mm, 130 mm, and 145 mm) are available for various applications.
- Compact, lightweight design
3 mm smaller in width and half the weight compared with the P-810.

MAJOR APPLICATIONS

1. Built-in use for equipment
2. Biotechnology industry
3. Semiconductor-related gas equipment

STANDARD SPECIFICATIONS

Measuring fluid	Gases	
Measuring range	Air	Min. 0.15 to 1.5 mL/min (nor) Max. 6 to 60 L/min (nor)
	<ul style="list-style-type: none"> • When selecting a flow range, refer to "Index & Quick Reference for P Series Purgometers" (TG-S0001). • When selecting a flow range, refer to the standard flow rate table. 	
Range ability	10 : 1	
Indication accuracy	±5% F.S.	
Fluid pressure	Max. 1 MPa	
Fluid temperature	Max. 120°C (Depends on the gasket material)	
Leak rate	1×10 ⁻⁷ Pa·m ³ /s or less (He) This is a typical value obtained during in-house tests, not a guaranteed value.	
Material	Wetted part	SCS14/SUS316
	Tapered tube	Heat-resistant glass
Material	Gasket	Fluoro rubber (Max. 120°C) Chloroprene rubber (CR) (Max. 80°C) Ethylene-propylene rubber (EPDM) (Max. 80°C) • The maximum fluid temperature for each gasket material may vary depending on usage and ambient conditions.
		Mounting plate
	Cover	Transparent PVC
Process Connection	Rc : 1/4" (Standard) , 1/8" NPT : 1/4", 1/8" SW : 1/4" or equivalent, 3/8" or equivalent VCR : 1/4" or equivalent, 3/8" or equivalent	
Standard cleaning	Degrease treatment (Ultrasonic cleaning) Non-water treatment	
Mounting	Lock nut mount on the panel front	
Mass	Approx. 0.28 kg (P-881)	

ALARM CONTACT AND OUTPUT

Type	Availability	
Reed switch type alarm unit	General	×
	UL-approved	×
PAU optical alarm unit	×	

For CE approval, refer to "Index & Quick Reference for P Series Purgometers" (TG-S0001).



STANDARD FLOW RATE TABLE

When the fluid pressure is other than 0 MPa, refer to "Index & Quick Reference for P Series Purgometers" (TG-S0001).

Air (0°C, 0 MPa)		
0.15 to 1.5 mL/min(nor)		40 to 400 mL/min(nor)
0.5 to 5 mL/min(nor)		60 to 600 mL/min(nor)
0.6 to 6 mL/min(nor)		80 to 800 mL/min(nor)
0.8 to 8 mL/min(nor)		0.1 to 1 L/min(nor)
1 to 10 mL/min(nor)		0.4 to 4 L/min(nor)
2 to 20 mL/min(nor)		0.6 to 6 L/min(nor)
4 to 40 mL/min(nor)		0.8 to 8 L/min(nor)
6 to 60 mL/min(nor)		1 to 10 L/min(nor)
8 to 80 mL/min(nor)		2 to 20 L/min(nor)
10 to 100 mL/min(nor)		4 to 40 L/min(nor)
20 to 200 mL/min(nor)		6 to 60 L/min(nor)

Other flow rate specifications are available. Contact us for details.

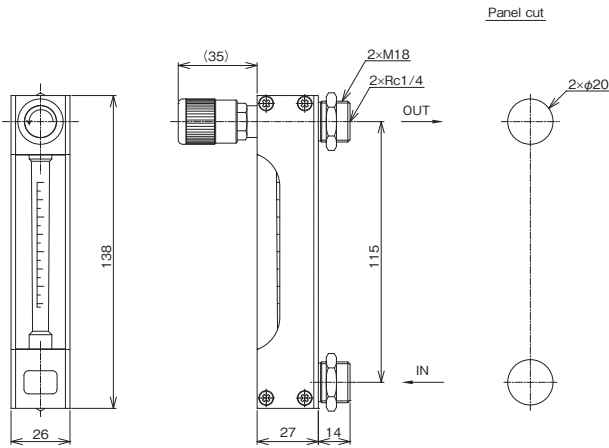
BASIC MODEL CODE

Model Code										Descriptions		
P-88	□	□	□	□	0	—	6	□	□	□		
Face-to-face dimension	1										115 mm	
	2										130 mm	
	3										145 mm	
	Z										Special	
Valve position	—	0									Not provided	
	—	L									Inlet	
	—	U									Outlet	
Valve color		N									Select this code for without a valve	
		B									Blue (Standard)	
		G									Green	
		S									Silver	
		Y									Yellow	
		O									Orange	
Alarm output		0									Not provided	
Wetted parts material		—	6								SCS14 / SUS316	
Gasket material								F			Fluoro rubber (Standard)	
								C			Chloroprene rubber (CR)	
								E			Ethylene-propylene rubber (EPDM)	
								Z			Special	
Process connection	—	R	1								Rc 1/8	
		R	2								Rc 1/4 (Standard)	
	—	N	1								1/8 NPT	
		N	2								1/4 NPT	
	—	S	2								1/4 SW or equivalent	
		S	3								3/8 SW or equivalent	
		—	V	2								1/4 VCR or equivalent
	V		3								3/8 VCR or equivalent	

DIMENSIONS

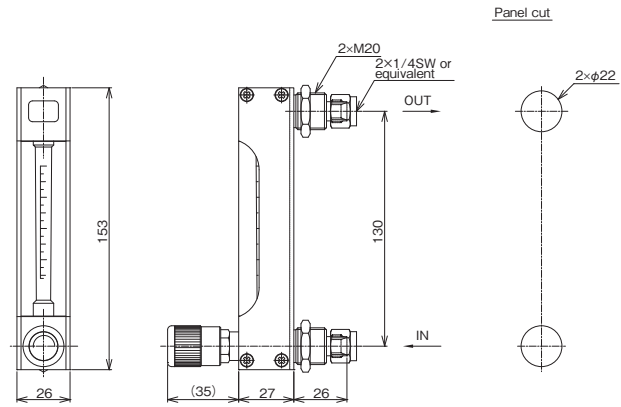
● **P - 881 - U □ 0 - 6 □ - R2**

- Lock nut mounting on the panel front
- Valve at the outlet



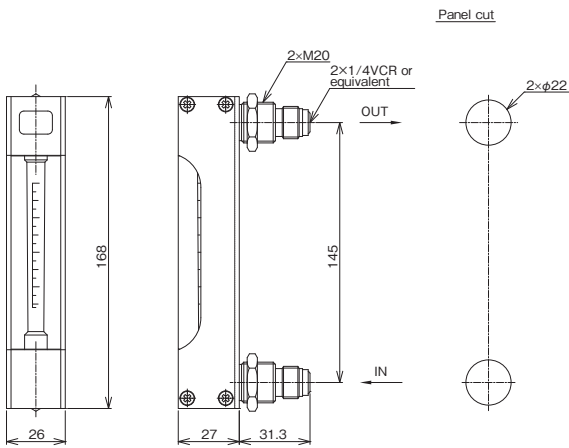
● **P - 882 - L □ 0 - 6 □ - S2**

- Lock nut mounting on the panel front
- Valve at the inlet



● **P - 883 - 0N0 - 6 □ - V2**

- Lock nut mounting on the panel front
- Without a valve



* Specification is subject to change without notice.

TOKYO KEISO CO., LTD.

Head Office : Shiba Toho Building, 1-7-24 Shibakoen, Minato-ku, Tokyo 105-8558
 Tel : +81-3-3431-1625 (KEY) ; Fax : +81-3-3433-4922
 e-mail : overseas.sales@tokyokeiso.co.jp ; URL : http://www.tokyokeiso.co.jp